

GENESIS UNIFIED EVENT MANAGER ENHANCEMENT

FORENSIC REPORTING ON ARCHIVED DATA AND LIVE VIEWS FROM THE UEM ON ASTRO® 25 NETWORKS

The Genesis UEM enhancement extends the functionality of the Motorola UEM in several ways. Like other Motorola reporting tools, the UEM provides an immediate diagnostic solution, but it does not archive every detail of reported activity beyond a very short period of time. For additional information on the Motorola UEM operation, refer to the Motorola Unified Event Manager manual.

The Genesis UEM enhancement receives the UEM traps through a connection to the NBI (North Bound Interface) and archives every trap and alert from the UEM into Genesis databases for as long as desired (typically 1-7 years).

UEM ENHANCEMENT REPORTS

- ❑ **UEM Alarm States**
Allows the user to enter a specific Date and Time. Reports on the current state of every piece of UEM-monitored equipment as of that specific date and time.
- ❑ **UEM Alarm Summary**
Allows the user to enter a specific Date and Time. Reports a summary of alarms by category (Communication, Equipment, QoS) and by Severity (Info, CommFailure, Minor, Major, Warning, Critical, Clear, Unknown) for that specific date and time. Several charts are embedded in the report to summarize them by Category, Severity or both.
- ❑ **UEM All Alarms**
Allows the user to enter a beginning Date and Time and an ending Date and Time for the reporting period. Reports on all alarms reported on the UEM during that reporting period.
- ❑ **UEM All Events**
Allows the user to enter a beginning Date and Time and an ending Date and Time for the reporting period. Reports on all events reported on the UEM during that reporting period (not limited to the 10,000 line view of the UEM).
- ❑ **UEM Hourly Alarms**
Allows the user to enter a beginning Date and Time and an ending Date and Time for the reporting period. Reports a summary of Alarm Severity reported on the UEM during that reporting period.

HARDWARE CONNECTIVITY

The following devices report hardware problems to the UEM:

- ✓ Archiving Interface Server
- ✓ Comparators
- ✓ Dispatch Consoles
- ✓ ISSI.1 Gateway Module
- ✓ Network Management Server
- ✓ NiceLog™ High Density Logger
- ✓ Site Controllers
- ✓ Terminal Servers
- ✓ Site Link Relay Module
- ✓ Base Radios
- ✓ Switches
- ✓ Motorola Gold Elite Gateway
- ✓ MOSCAD RTUs
- ✓ Packet Data Gateway
- ✓ Routers
- ✓ SmartX Site Converter
- ✓ Voice Processor Module

The following devices are located in virtual containers of the Generic Application Server (GAS) and faults are reported through a GAS UEM Alarm:

- ✓ Air Traffic Router
- ✓ Unified Network Configurator
- ✓ Zone Controller
- ✓ Zone Statistics Server
- ✓ Unified Event Manager
- ✓ User Configuration Server
- ✓ Zone Database Server

EVENT GEOGRAPHIC LOCATOR

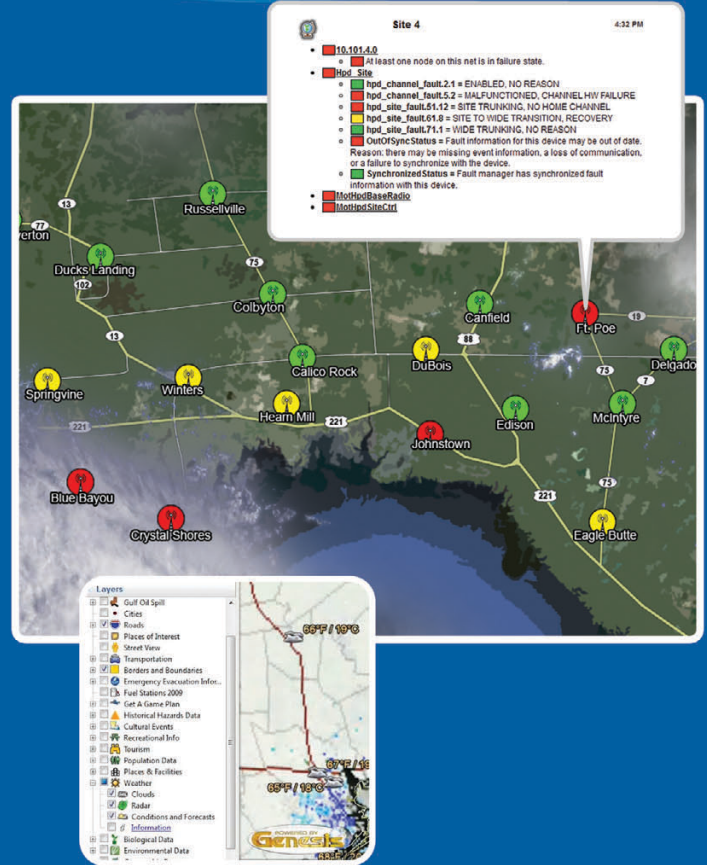
EGLView maximizes the sophisticated mapping power of Google™ Earth to perform useful visual enhancements, such as panning, tilting and zooming. Graphical representations of tower sites appear according to their geophysical location on the map. More than simple eye candy, EGLView provides valuable at-a-glance system information to control rooms and network operations centers.

INSTANT SITE STATUS VIEWS

EGLView is a modular enhancement for the Genesis UEM enhancement. It adds another dynamic layer to Google Earth, enhancing its existing display of live atmospheric conditions, such as rainfall, hail and lightning strikes, weather forecasts, as well as traffic and other information...all from one user interface.

INFORMATION A CLICK AWAY

EGLView combines tower status messages with Google Earth features, such as weather or traffic conditions. When a storm is brewing, EGLView will show how all sites are affected. Each icon represents a tower site. Colors (green, yellow, red) represent the current status of each location. Clicking on an icon will expand a tree view which provides more detailed information on a site.



USAGE SCENARIOS

- ▶ A hurricane has just hit the coast, causing high winds, torrential rain, and flooding. While tracking real-time weather patterns, EGLView adds a layer of live status updates to the map interface.
- ▶ EGLView provides a view of multiple sites or networks separated by hundreds or even thousands of miles. From a single location, EGLView helps operators self-diagnose site issues before they become maintenance problems. This reduces the need for on-site technician visits and provides visibility on system performance and usage from a centralized location.



1-877-548-0465 (US & Canada)
1-903-561-6673 (Worldwide)

Visit www.genesisworld.com/EGLView