

# GenSPOut

GENESIS SPECIFIED PACKET OUTPUT



**GenSPOut** (*Genesis Specified Packet Output*) splits complex trunking network data, filters and distributes it to multiple destinations. A powerful specialty module for GenWatch3®, GenSPOut formats multiple input streams, such as 3600 or P25 Control Channel, ATIA and location (OLS). Then GenSPOut passes the data to a variety of user-defined external devices, such as specialized CAD systems, consoles, voice recorders, alarm devices and much more!

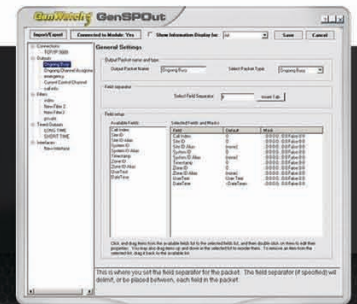
[GENESISWORLD.COM/GSP](http://GENESISWORLD.COM/GSP)



# GenSPOut

GENESIS SPECIFIED PACKET OUTPUT

GenSPOut starts with the packet stream flowing through GenWatch3. Packets are parsed and duplicated to feed user-configured connections. From there, GenSPOut filters and eliminates any unnecessary data. Finally, it re-assembles the desired data and parses it to all desired devices.



## OUTPUT DATA TYPES

An output is a packet of data that will be sent out on one or more connections each time a certain packet type of information is received by GenSPOut. The solution offers dozens of trunked radio system packet types.

The most common are:

- ▶ **Emergency Alarm:** Received when the radio's emergency button is pushed
- ▶ **ID or ID Alias**
- ▶ **Talkgroup or Talkgroup Alias**
- ▶ **Call Type:** Identifies whether call is normal, busy, emergency, etc.
- ▶ **GPS Location:** Indicates the radio's GPS device is updating its location to Motorola OLS
- ▶ **Status:** Indicates a radio user has sent a status update
- ▶ **Channel Assignment or Ongoing Channel Assignment**
- ▶ **End of Call**
- ▶ **Current Control Channel:** Notifies radios of the current frequency on which data is being transmitted
- ▶ **Call Info Change:** Received when call parameters have been updated
- ▶ **Busy or Ongoing Busy:** Indicates busy conditions
- ▶ **End of Busy:** Issued when a busy is ended

## CONNECTION PROTOCOLS

There are three possible types for connections:

- ▶ TCP Server
- ▶ UDP Server
- ▶ Serial

## SOLUTION BENEFACTORS

Because of its unique filtering and distribution capabilities, GenSPOut is an extremely useful tool for:

- ▶ Voice Recorders
- ▶ Console Manufacturers
- ▶ CAD Vendors

## CONTACT GENESIS

1 (877) 548-0465 — US or Canada  
+1 (903) 561-6673 — International  
[info@genesisworld.com](mailto:info@genesisworld.com)



[GENESISWORLD.COM / GSP](http://GENESISWORLD.COM/GSP)

