



GenWatch3[®]
Installation & Quickstart Guide
Software Version 2.3

GenWatch3[®]

Trademarks

The following are registered trademarks of Motorola: RIM-II, SmartZone, SmartNet, ASTRO®.

Any other brand or product names are trademarks or registered trademarks of their respective holders.

The Genesis Group Trademark Information

GenWatch3® is a registered trademark of GenCore Candeo, LTD., a subsidiary of Burks Gencore Co., Inc. D.B.A. The Genesis Group and Phil Burks.

Copyright

Copyright © 2011; Burks Gencore Co., Inc. D.B.A. The Genesis Group and Phil Burks. All rights are reserved. No part of this publication or the associated program may be reproduced, transmitted, transcribed, in whole or in part, in any form or by any means, whether it is mechanical, magnetic, optical, electronic, manual or otherwise, without the prior written consent of Burks Gencore Co., Inc. D.B.A:

The Genesis Group and Phil Burks
601 Shelley Dr., Suite 202
Tyler, Texas 75701.

Includes technology licensed from Motorola.

Disclaimer

The GenWatch3 Installation & Quickstart Guide is printed in the U.S.A. Burks Gencore Co., Inc. D.B.A. The Genesis Group and Phil Burks believe that the information included in this manual is correct; however, Burks Gencore Co., Inc. D.B.A. The Genesis Group and Phil Burks reserves the right to alter, revise and make periodic changes to the manual and its contents. Burks Gencore Co., Inc. D.B.A. The Genesis Group does not assume responsibility to notify any person of such revisions or changes. While we have taken strides to carefully examine our software and documentation and believe that it is reliable, the Genesis Group and Phil Burks assume no responsibility for the use of the manual, or GenWatch3 software, nor for any patent infringements or other rights of third parties who may use the manual or the GenWatch3 software. Burks Gencore Co., Inc. D.B.A. The Genesis Group and Phil Burks make no representations or warranties with respect to the contents or fitness for a particular purpose beyond the cost of the software paid by the end-user.

The software contains valuable trade secrets and proprietary information. Unauthorized use of the manual or software can result in civil damages and criminal prosecution. As an end user, you agree to abide by and heed these statements.

License

Title to the media on which the program is recorded and to the documentation in support of the product is transferred to you, but title to the program, and all subsequent copies of the program, despite the form or media in or on license is not a sale of the original or any subsequent copy. You assume responsibility for the selection of the program to achieve your intended results, and for the installation, use, and results obtained from the program.

Refer to the GenWatch3 Manual Overview for your full license. All license information contained on pages 4-7 (Book 600-2.3.0-AA.1) are to be considered as contained herein.

Support

Customer satisfaction is our number one priority at Genesis. We are here to provide you with the best software possible, and we want to know when you have any questions, concerns or problems with GenWatch3 so that we can make it a better product for everyone.

Refer to the *Troubleshooting & Support* section of the GenWatch3 Manual Shell (Book 600-2.3.0-AA.1) for complete support and contact information.

Document History

Revision	Description	Author
2.0.1	Initial Release	JAW
2.0.3	Revision before release	JAW
2.0.3	Updated installation screens	KIH
2.0.4	Release Revisions	KIH
2.0.4	Updated Remote DB instructions	KIH
2.0.5	Proofreading/Editing	JWR
2.0.6	Updated screenshots for F1 Help	REB
2.0.6	Added Firewall settings section	JAW
2.0.6.6	Revision before release	KIH
2.2	Addition to Firewall Settings section	CWF
2.2	Document Reviewed	WRK
2.3	Revisions before release	CWF

Table of Contents

Trademarks	4
The Genesis Group Trademark Information	4
Copyright	4
Disclaimer	4
License	4
Support	4
DOCUMENT HISTORY	5
TABLE OF CONTENTS	6
ABOUT THIS MANUAL	8
GOALS	8
WHO SHOULD READ THIS MANUAL?	8
HOW THIS MANUAL IS ORGANIZED	8
CHAPTER 1 INSTALLING GENWATCH3	10
WARNINGS	10
PREFERRED HARDWARE SPECIFICATIONS FOR GENWATCH3 COMMANDER SERIES	12
GenWatch3 Commander Host/Client System Specifications	12
Purchased Separately	12
MINIMUM HARDWARE SPECIFICATIONS FOR GENWATCH3 NON-COMMANDER SERIES	13
GenWatch3 Non-Commander Host System Specifications	13
GenWatch3 Non-Commander Client System Specifications	13
HARDWARE ENHANCEMENT OPTIONS	14
GENWATCH3 SOFTWARE INSTALL	15
Required Software	15
Preparing to Install	16
Install Screens	17
Installation Complete	23
SNMP Configuration	24
FIREWALL CONFIGURATION	26
Windows XP/Vista	26
Windows 7	27
Windows Server 2008	28
CHAPTER 2 GETTING STARTED	30
CHAPTER 2 GETTING STARTED	30
LOADING GW_ALERTS	30
LOGGING INTO GW_ALERTS	31
LOADING GW_LAUNCHPAD	32
ACTIVATING THE GENWATCH3 LICENSE	33
CHAPTER 3 CONFIGURING THE GW_SECURITY MODULE	34
WHAT IS GW_SECURITY?	34
LOADING THE GW_SECURITY EDIT SCREEN	34
CHANGING THE PASSWORD FOR THE ADMIN USER	35
CHAPTER 4 CONFIGURING THE GW_ARCHIVER MODULE	36
WHAT IS GW_ARCHIVER?	36
LOADING THE GW_ARCHIVER EDIT SCREEN	37

CHOOSING ARCHIVED PACKET TYPES	37
CHOOSING PURGING OPTIONS	38
CONCLUSION	38

Goals

This document guides you through the GenWatch3 installation and initial setup process. After you complete the steps in this document, you will be ready to configure the input module(s) that GenWatch3 will use to communicate with your system(s).

Who Should Read This Manual?



This document is written for an audience with an understanding of computer and network administration. Specifically, anyone performing an initial installation of GenWatch3 should read this manual.

How This Manual Is Organized

This manual is organized as follows:

- **Installing GenWatch3:** Describes the process of installing GenWatch3.
- **Getting Started:** Instructions on logging into GW_Alerts and beginning the GenWatch3 evaluation.
- **Configuring the GW_Security Module:** Instructions on changing the default *Admin* login.
- **Configuring the GW_Archiver Module:** Instructions on setting up data archiving for reporting and historical data.

This manual contains the following images, used to indicate that a segment of text requires special attention:

-  **Additional Information:** Additional information is used to indicate shortcuts or tips.
-  **Warning:** Warnings are used to indicate possible problem areas; such as a risk of data loss or incorrect/unexpected functionality.

This chapter contains the following sections:

- **Warnings:** Provides some warnings about GenWatch3 configurations.
- **Preferred Hardware Specifications for GenWatch3 Commander Series:** Describes the hardware configuration required for a GenWatch3 Commander Host and/or GenWatch3 client installs.
- **Preferred Hardware Specifications for GenWatch3 Non-Commander Series:** Describes the hardware configuration required to support a GenWatch3 installation.
- **Hardware Enhancement Options:** Describes additional hardware options.
- **GenWatch3 Software Install:** Provides detailed instructions for installing and licensing the GenWatch3 software.
- **Firewall Configuration:** Describes the proper setup of the Windows firewall.

Warnings



If you change the name of the GenWatch3 host computer, you must restart the GenWatch3 service.



You must install Microsoft SQL Server 2005/2008 on the host machine in order to create a host/client install. SQL Server Express DOES NOT support remote user connectivity on its databases. Microsoft SQL Server 2005/2008 DOES support remote user connectivity.



SQL Server® 2005/2008 is recommended for users that wish to archive data and run daily reports. GenWatch3 is shipped with a freeware version of Microsoft SQL Server 2005 (SQL Server Express). SQL Server Express is limited by maximum size of 3.5 GB of archived data. When the maximum size is reached, the database will not be updated with new records and may stop functioning.



The GenWatch3 machine must use an English-language version of Microsoft Windows using the English language set.



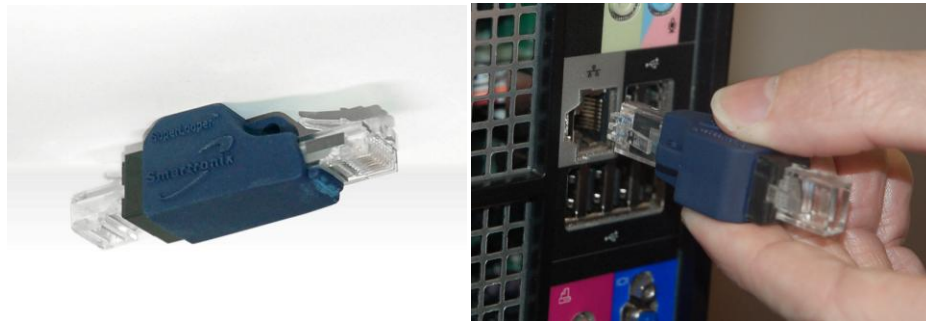
GenWatch3 Commander Host is supplied with SQL Server® 2005/2008. GenWatch3 Commander LE is only supplied with SQL Server Express. As such, LE owners will not be able to have remote clients and will be limited to 3.5GB of Control Channel data.



The GenWatch3 machine (client or host) must be a member of a Microsoft Windows network. GenWatch3 relies on DNS resolution for the TCP/IP and SQL connections that it uses. If the machine running GenWatch3 is not a member of a network, the GenWatch3 software will not function properly unless you follow the instructions below.



If you wish to use GenWatch3 on a machine that is not connected to a network, you must install a loopback adaptor. A hardware loopback adaptor has been included with your GenWatch3 host machine. Connect the adaptor to the machine's Ethernet port as shown below.



The Microsoft Loopback Adapter can be installed if a hardware adaptor is not available. To install this software loopback adapter, follow the steps below.

Windows XP

1. Click **Start**.
2. Click **Control Panel**.
3. In the control panel, choose **Add Hardware**: This will load the **Hardware Wizard**.
4. Click the **Next** button.
5. Choose **Yes, I have already connected the hardware** and click **Next**.
6. Choose **Add a new hardware device** from the list and press **Next**.
7. Select **Install the hardware that I manually select from a list** and click **Next**.
8. Select **Network Adapters** from the list and click **Next**.
9. Under manufacturer, select *Microsoft*.
10. Select *Microsoft Loopback Adapter* from the **Network Adapter** list and click **Next**.
11. Click **Next**. Windows will install the loopback adapter.
12. Click **Finish**.
13. Do not customize the properties of this loopback adapter. It should work with the default settings.

Windows Vista/7

1. Click **Start**.
2. Search for *cmd*.
3. Right-click *cmd.exe* and select "**Run as Administrator**" (click yes if a confirmation dialog appears).
4. In the *cmd* window type *hdwwiz.exe* this will launch the "**Add Hardware Wizard**".
5. Click the **Next** button.
6. Select "**Install the hardware that I manually selected from a list (Advanced)**" option then click the **Next** button.
7. Select **Network adapters** from the **Common hardware types** list then click the **Next** button.
8. Under the **Manufacturer** list select **Microsoft**, under the **Network Adapter** list select **Microsoft Loopback Adapter**. Click **Next**.
9. On the next window confirm that **Microsoft Loopback Adapter** is the hardware selected to be install then click **Next** to start installation.
10. Click the **Finnish** button to complete the process and close the **Add Hardware Wizard**.

Preferred Hardware Specifications for GenWatch3 Commander Series

The following hardware specification is used for both the GenWatch3 Commander Host and GenWatch3 Client.

GenWatch3 Commander Host/Client System Specifications

- Z400 Workstation – from Hewlett Packard® (HP)
- 22-inch LP2065 Flat Panel Monitor
- Microsoft® Windows® 7 Professional
- HP Z400 US Localization kit
- Intel Quad Core Xeon Processor W3520/2.66 GHz, 8 MB, 1066 MHz FSB
- nVidia Quadro FX580 512MB PCI-E
- 4 Gigabytes (2x2048) DDR3-1333 RAM
- HP 160GB SATA 10,000rpm SFF HD (1st)
- HP 16X DVD+/-RW, Super Multi SATA
- HP PS/2 Standard keyboard
- HP PS/2 Scroll mouse
- Microsoft® Office 2007 Basic (32-bit O/S only)
- 3/3/3 (parts/labor/next business day on-site) limited warranty
- HP Silver Flat Panel Speaker Bar
- 1 Serial Port Standard, 2 is optional from HP (required by GenWatch3)
- 12 USB Ports
- Integrated Sound Card
- Integrated NIC

Purchased Separately

- (Host Only) Microsoft SQL Server® 2008 Workgroup Edition
- USRobotics Performance Pro 56K Modem – (Can be purchased from HP)
- pcAnywhere® v11 or newer
- (Host and LE Only) External Alarm Hardware (OnTrak ADU208)
- (Host Only) RocketPort® Interface RS232 – 16 Ports 94100-2
- (Host Only) RocketPort® Universal PCI 16-Port 99125-0
- (Customer Supplied Optional) Network connectivity hardware such as cables and hubs
- (Customer Supplied Optional) Printer and associated cables

Minimum Hardware Specifications for GenWatch3 Non-Commander Series

GenWatch3 requires, at a minimum, the following system specifications:

GenWatch3 Non-Commander Host System Specifications

- Intel Core™ 2 Duo Processor E6550/2.33 GHz, 4 MB, 1333 MHz FSB or better.
- Memory (RAM) of 2 Gigabytes or greater.
- Hard Drive 60 Gigabytes available or greater (for archiving).
- CD-ROM Drive.
- Monitor with 1280 x 1024 or better resolution suggested.
- Video adapter with 128 Megabytes of video RAM (DirectX compatible).
- Sound Card with Speakers (capable of playing .WAV files) (recommended).
- Operating System: Windows XP Professional, Windows Vista / 7.
- One serial port per control channel that you wish to monitor.
- One RF-modem and RIM-II for each system you wish to monitor.
- Microsoft Office XP/2003/2007 for reporting.



If you will be installing GenWatch3 Host on a computer running Windows Vista, contact GenWatch3 support or go here: <http://www.GenesisWorld.com/WindowsVista> for Windows Vista specific workarounds and additional installation instructions.

GenWatch3 Non-Commander Client System Specifications

- Intel Core™ 2 Duo Processor E6550/2.33 GHz, 4 MB, 1333 MHz FSB or better.
- Memory (RAM) of 2 Gigabytes or greater.
- Hard Drive 30 Gigabytes available or greater (7500+ rpm).
- CD-ROM Drive.
- Monitor with 1280 x 1024 or better resolution suggested.
- Video adapter with 128 Megabytes of video RAM (DirectX compatible).
- Sound Card with Speakers (capable of playing .WAV files) (recommended).
- Operating System: Windows XP Professional, Windows Vista / 7.
- TCP/IP connectivity to the GenWatch3 Host machine.
- Microsoft Office XP/2003/2007 for reporting.



If you will be installing GenWatch3 Client on a computer running Windows Vista, contact GenWatch3 support or go here: <http://www.GenesisWorld.com/WindowsVista> for Windows Vista specific workarounds and additional installation instructions.

Hardware Enhancement Options

There is no such thing as *too much power*. The following hardware options will improve the performance of GenWatch3:

- **Increase the hard drive speed beyond 10000 rpm:** When archiving or reporting on a great deal of data, the hard drive will sometimes become the bottleneck of the system. This can lead to the processor waiting on the hard drive.
- **Increase the memory (RAM) beyond 2 gigabytes:** When GenWatch3 is processing data on a system with thousands of radio IDs and talkgroups, it uses a lot of memory. If your machine needs more memory than is available, it will begin using the swap file on the hard disk to store data that should be in memory. Because the hard drive operates at a speed that is up to 1000 times slower than memory, it is important to avoid hard drive swapping.
- **Increase the processor beyond 2.33 GHz per processor:** If your machine has a fast hard drive and plenty of memory, increasing the processor will increase the performance of the machine.

GenWatch3 Software Install

To begin the software installation process, insert the GenWatch3 CD into a CD drive. The GenWatch3 setup program should launch automatically. If the auto-run feature does not launch the program, browse to the CD's root directory and double-click on *setup.hta*.

Required Software

In order to support GenWatch3, the following components must be installed on your computer:

- Microsoft DirectX 9.0c or higher
- Microsoft Data Access Components (MDAC) 2.8 or higher
- Microsoft SQL Server Standard or SQL Server Express*
- Microsoft .NET Framework 4.0

*Microsoft SQL Server Management Studio Express Edition is installed with SQL 2005 Express

If your computer does not have Microsoft .NET Framework 4.0 installed, you will see a screen similar to the one shown in Figure 1.1. Click **Install** to begin installing .NET Framework 4.0.

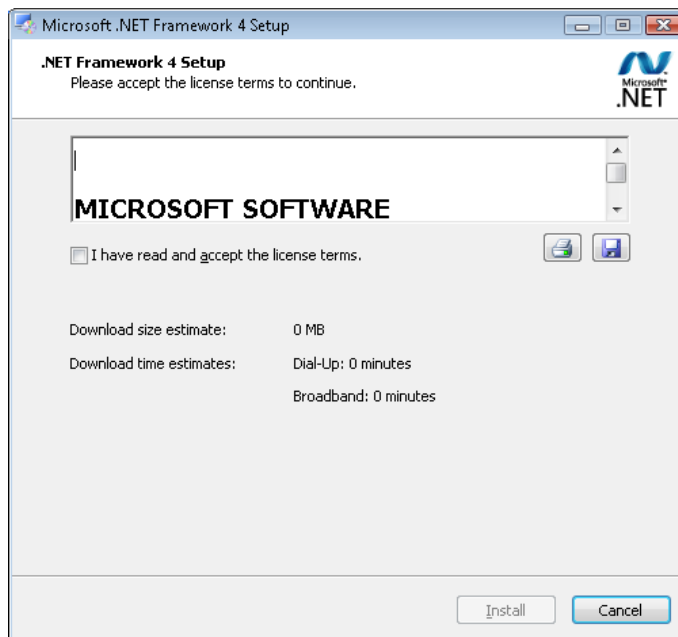


Figure 1.1 – .NET Framework 4.0 Installer.

Preparing to Install

After the .NET Framework 4.0 is installed, the **GenWatch3 Installer** will launch. The Welcome screen in Figure 1.2 allows you to begin the installation process or launch any of the installation guides included on the GenWatch3 CD.



Figure 1.2 – GenWatch3 Welcome screen

When you click **Install GenWatch3**, the MDAC2.8 and DirectX 9.0c prerequisites are verified. If either is missing, you will see the prompt in figure 1.3 listing the missing item(s). Click **OK** to install the prerequisites or **Cancel** to stop the GenWatch3 installation.

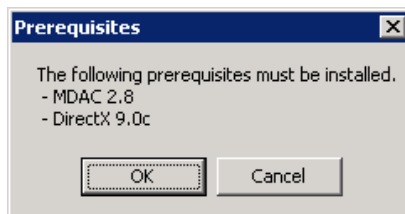


Figure 1.3 – Prerequisites

The installation of these prerequisite components may require you to restart your computer. After a restart, the installer should resume the setup process automatically. If it does not, browse to the GenWatch3 CD's root directory and double-click on *setup.exe*.

Install Screens

At the **Setup Type** screen (Figure 1.4) choose the type of GenWatch3 installation you wish to perform: **Host**, **Client** or **Database Only**. Click **Next** to proceed.



Figure 1.4 – Setup Type screen

- **Host:** Select **Host** to install the GenWatch3 service and the GenWatch3 interfaces. If GenWatch3 will be installed on one machine, select **Host**.
- **Client:** Select **Client** to install only the GenWatch3 interfaces. These are used to display information processed and stored by a GenWatch3 host.
- **Database Only:** Select **Database Only** to setup and initialize a GenWatch3 database for use by a remote GenWatch3 host. The **Database Only** installation must be complete before installing the GenWatch3 Host. The GenWatch3 host should then be installed with the remote database configured in the **Database Options** screen.



A **Database Only** installation requires an instance of SQL Server. SQL Server 2005 Express Edition can be installed from the GenWatch3 CD.

At the **Destination Folder** screen (Figure 1.5) review the installation location and click **Change** to select a different folder. Click **Next** when you are satisfied with the location to which GenWatch3 will be installed.



Figure 1.5 – Destination Folder screen



Genesis strongly recommends installing GenWatch3 to the path *C:\Program Files\Genesis\GenWatch3* (*C:\Program Files (x86)\Genesis\GenWatch3* on 64 bit systems). If you wish to install GenWatch3 in a different location, please contact GenWatch3.

The **Database Options** screen (Figure 1.6) allows you to choose an SQL Server Instance to host the GW database. The selection will default to the local, default instance of SQL Server if it exists. If there is not a default instance installed, the *<Install SQL Express>* option will be available. Click *<Browse for more>* to search the network for existing SQL Server instances. Click **Next** to proceed.



Figure 1.6 – Database Options screen



GenWatch3 Commander Series Owners:

We have installed your databases to the following location:

Windows XP:

C:\Documents and Settings\All Users\Application Data\Genesis\GenWatch3\Database


Windows Vista/7:


C:\ProgramData\Genesis\GenWatch3\Database

The **Admin Password** screen (see Figure 1.7) prompts you to set the *Admin* password. The *Admin* account is created during the installation and is used to login to GenWatch3 when the installation is complete. Click **Next** to continue.



Figure 1.7 – Set Admin Password screen

 The password provided must meet the password policy in SQL Server. Some policies require a combination of upper-case, lower-case, and numeric values.

 GenWatch3 creates the *Admin* user in the GenWatch3 SQL database. This is not a Windows login user.

The **Installation Options** screen (see Figure 1.8) allows you to select what options you would like to enable or install.



Figure 1.8 – Installation Options screen

When all installation information has been collected, both host and client setup types will show the **Ready to Install** screen shown in Figure 1.9. Click **Install** to begin installing GenWatch3.



Figure 1.9 – Ready to Install screen

If you choose to install SQL Server Express you will see the screens in Figure 1.10 as SQL installs on the local machine.

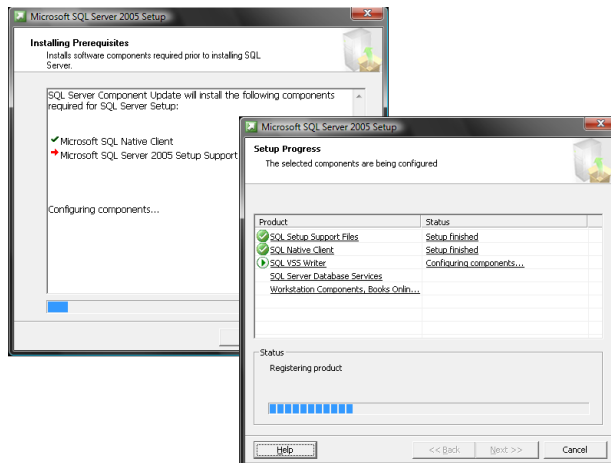


Figure 1.10 – SQL Server Express Installation

If you choose to install SQL Server Management Studio Express you may see the prompt in Figure 1.11. Click **Run** to continue with the installation.

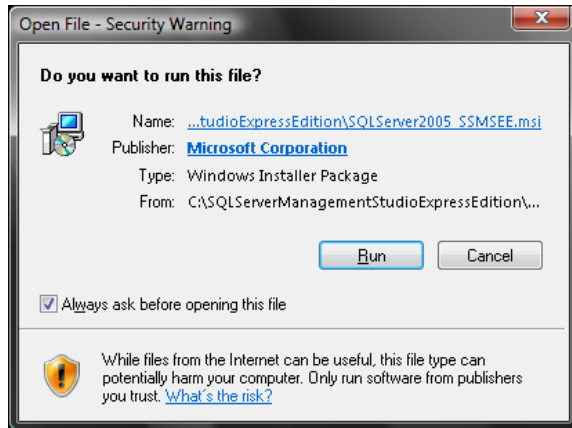


Figure 1.11 – SQL Server Manager Express

Please wait while GenWatch3 installs. You will see a progress bar like the one shown in Figure 1.12 that indicates the progression of the installation. You will also see several DOS windows pop up and disappear in the background. They are performing background configuration and are normal.



Figure 1.12 – Installation Progress screen

Installation Complete

When the installation finishes, you will see the **Installation Complete** screen, as shown in Figure 1.13. Click **Finish** to exit the setup program

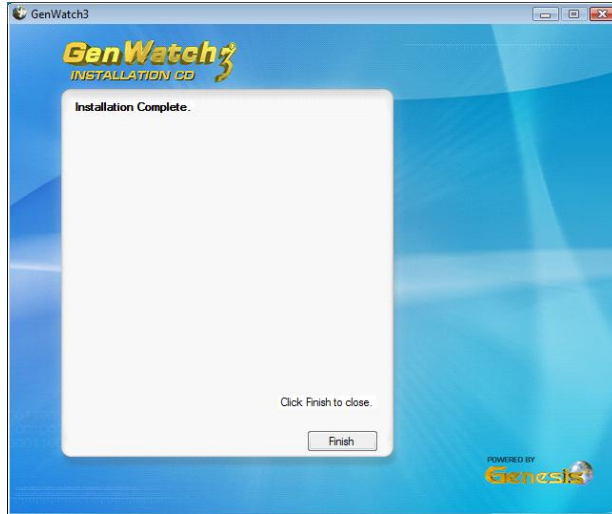


Figure 1.13 – Installation Completed screen

You will notice that we have added GenWatch3 shortcuts to your desktop and start menu. We have also entered GenWatch3 in the startup folder to ensure the program starts with windows.

To launch the GW_Alert manually, double-click the GenWatch3 icon on your desktop, or go to the **Windows Start** menu and navigate to **Programs** → **Genesis** → **GenWatch3** → **GenWatch3**.

Please see the following chapters of this document for instructions on launching and configuring GenWatch3.

SNMP Configuration

This section describes the process of setting up the *GET SNMP Master Agent Service* for use with GenWatch3. If you do not intend on using SNMP functionality within GenWatch3, you may skip this section.

Browse to the GenGET Master Agent Settings directory using Windows Explorer as shown in Figure 1.14. This directory may be hidden by default.

- **Windows XP:** *C:\Documents and Settings\All Users\Application Data\Genesis\GenGET\SNMPMasterAgentService\Master Agent Settings*
- **Windows Vista/7:** *C:\ProgramData\Genesis\GenGET\SNMPMasterAgentService\Master Agent Settings*

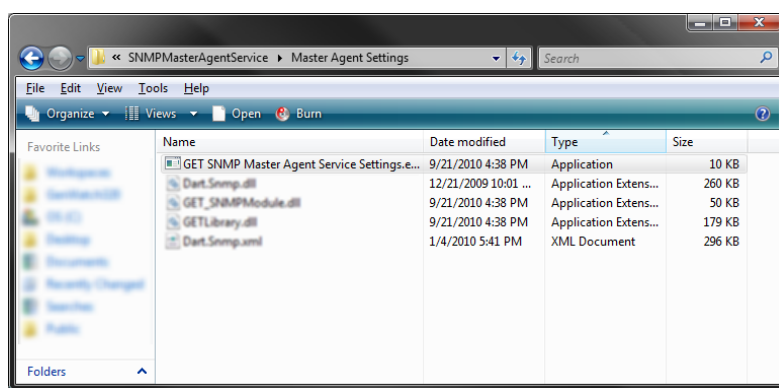


Figure 1.14 –Master Agent Settings Directory

Run *GET SNMP Master Agent Service Settings.exe* (Windows Vista / 7 users, right-click and **Run as Administrator**). This will display the configuration file selector shown in Figure 1.15. Select the *GET SNMP Master Agent Service.exe.config* file and click **Open**.

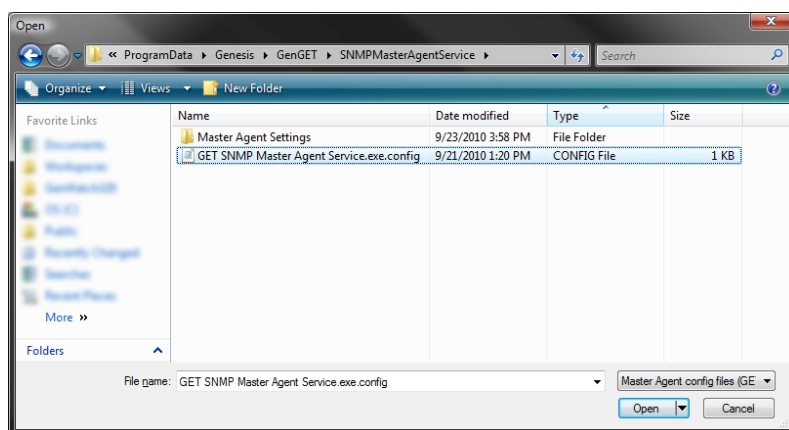


Figure 1.15 – Configuration File Selector

The *Master Agent Settings* window will be displayed after you select the configuration file. Set the **Local Address** setting marked red in Figure 1.16. Click **OK** to continue.

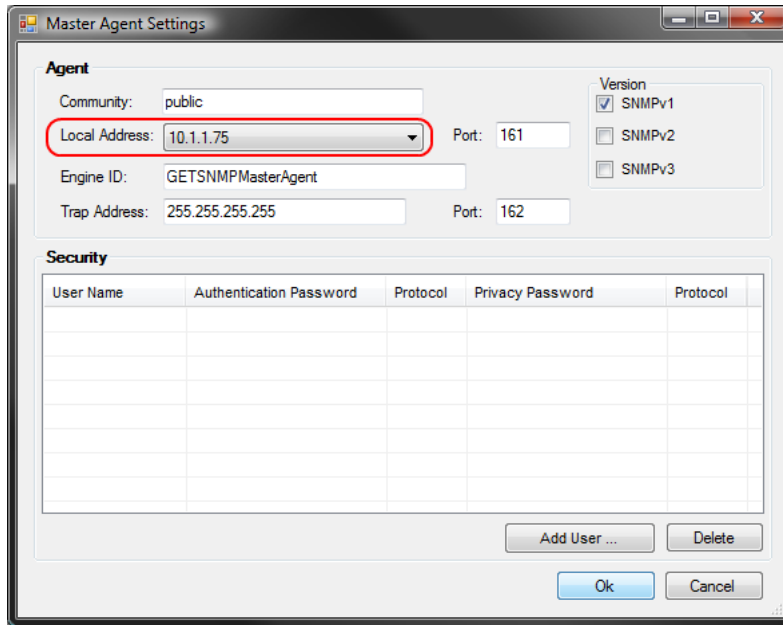


Figure 1.16 – Master Agent Settings

Now, you can start the *GETSNMPMasterAgentService* via the *Computer Management* window (Figure 1.17). To access this window, right-click on **My Computer** and select **Manage**. Then expand **Services and Applications** and select **Services**. Select the *GETSNMPMasterAgentService* and click **Start**.

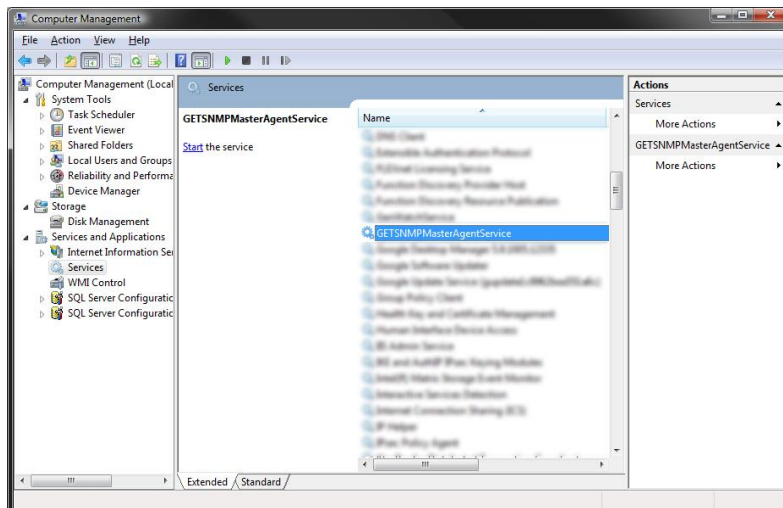


Figure 1.17 – Computer Management

This completes the setup process for the GET SNMP Master Agent Service.

Firewall Configuration

Windows XP/Vista

The following programs must be allowed through the Windows Firewall:

- GenWatch.exe – This is the GenWach3 service executable.
`C:\Program Files\Genesis\Genwatch3\GenWatch.exe`
- SqlServer.exe
`C:\Program Files\Microsoft SQL Server\MSSQL.1\MSSQL\Binn\sqlservr.exe`

The following ports may also need to be allowed through the Windows Firewall:

- TCP 9130, 9131 – These ports are required to connect to Topaz devices.

To access the Windows Firewall setting within Windows XP:

Control Panel → **Windows Firewall** → **Exceptions** tab

To access the Windows Firewall setting within Windows Vista:

Control Panel → **Windows Firewall** →
Allow a program through Windows Firewall

To add a program to the windows firewall exception list:

1. Click **Add program...** to display the *Add a Program* dialog.
2. Click **Browse...** and navigate to the directory with the target executable.
3. Click **Open** on the *Browse* window and **OK** on the *Add a Program* window

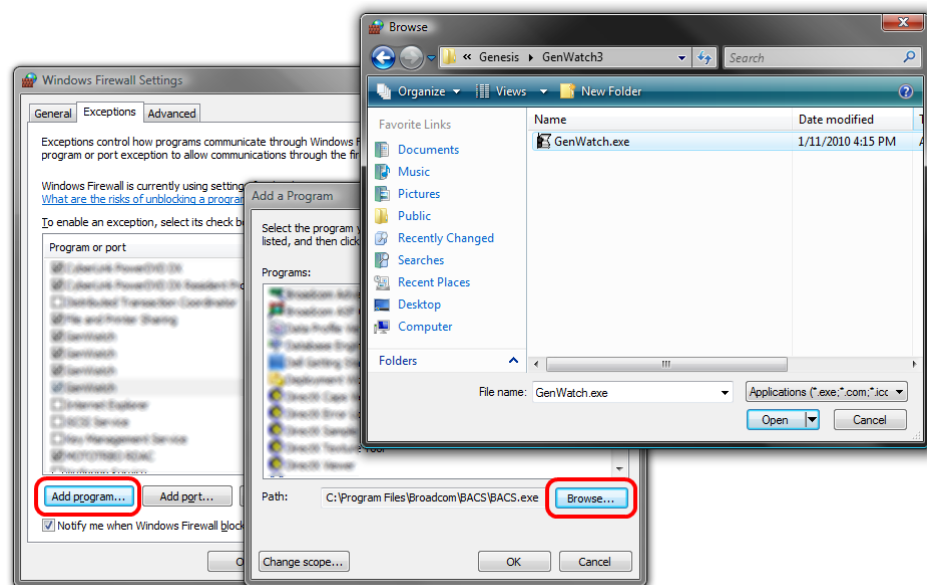


Figure 1.18 – Adding a program exception to Windows Firewall

Windows 7

The following programs must be allowed through the Windows Firewall:

- GenWatch.exe – This is the GenWach3 service executable.
`C:\Program Files\Genesis\Genwatch3\GenWatch.exe`
- SqlServer.exe
`C:\Program Files\Microsoft SQL Server\MSSQL.1\MSSQL\Binn\sqlservr.exe`

To access the Windows Firewall setting within Windows 7:

Control Panel → Windows Firewall → Advanced Settings

To add a program or port range to the windows firewall exception list:

1. Click **Inbound Rules...** to display the inbound exceptions list.
2. Click **New Rule...** to launch the *New Inbound Rule Wizard*.
3. Follow the instructions within the *New Inbound Rule Wizard*. When complete, the new program or port exception will appear within the inbound exceptions list.

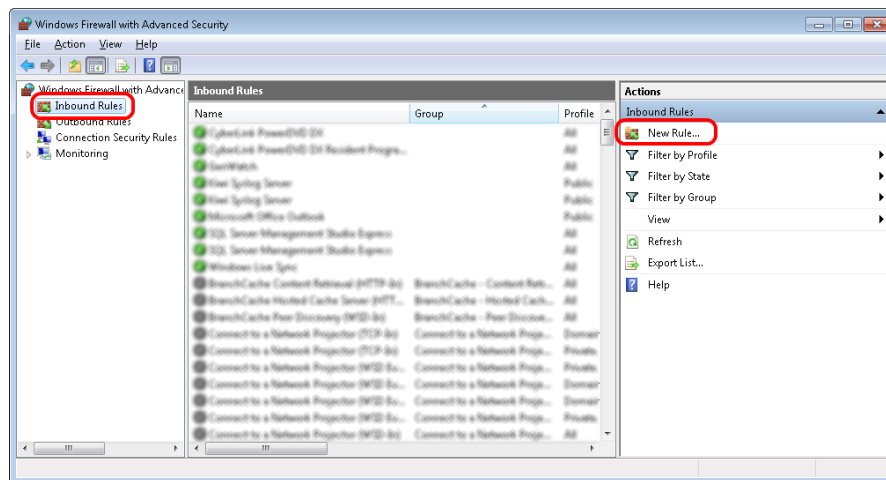


Figure 1.19 – Windows 7 Firewall Advanced Settings

Please see the following chapters of this document for instructions on launching and configuring GenWatch3.

Windows Server 2008

The following programs must be allowed through the Windows Firewall:

- GenWatch.exe – This is the GenWach3 service executable.
C:\Program Files\Genesis\Genwatch3\GenWatch.exe
- SqlServer.exe
C:\Program Files\Microsoft SQL Server\MSSQL.1\MSSQL\Binn\sqlservr.exe

To access the Windows Firewall setting within Windows 7/Server 2008:

Control Panel → Windows Firewall → Change settings

To add a program to the windows firewall exception list:

1. Click the **Exceptions** tab... to display the exceptions list (Fig 1.20a).
2. Click **Add program...** to launch the *Add a program* window (Fig 1.20b).
3. If the desired program does not display in the Programs list click on the **Browse..** button to navigate to program executable desired (ex. *C:\Program Files\Genesis\GenWatch3\GenWatch.exe*). Select the .exe file of the program you would like to add then click the **Open** button (Fig 1.20c), this add the program to the exception list and checks it to be exempt.

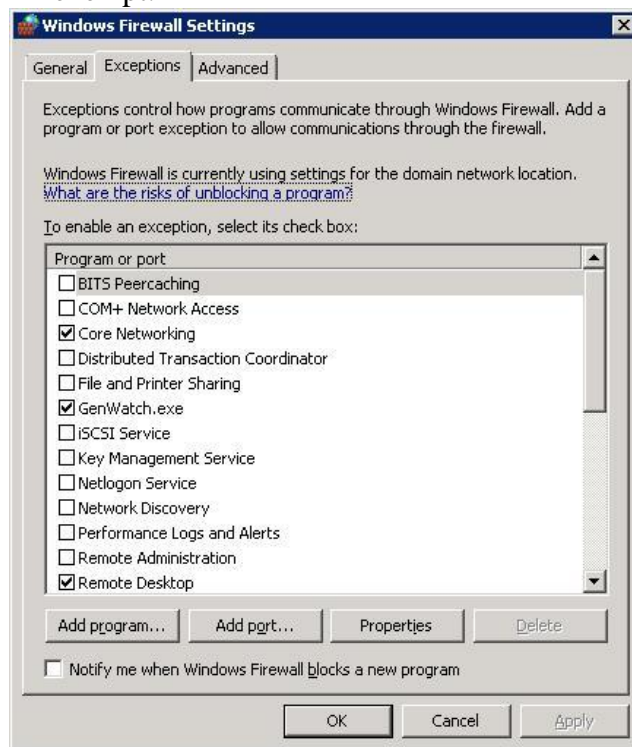


Figure 1.20(a) – Windows Server 2008 Firewall Exceptions

Please see the following chapters of this document for instructions on launching and configuring GenWatch3.

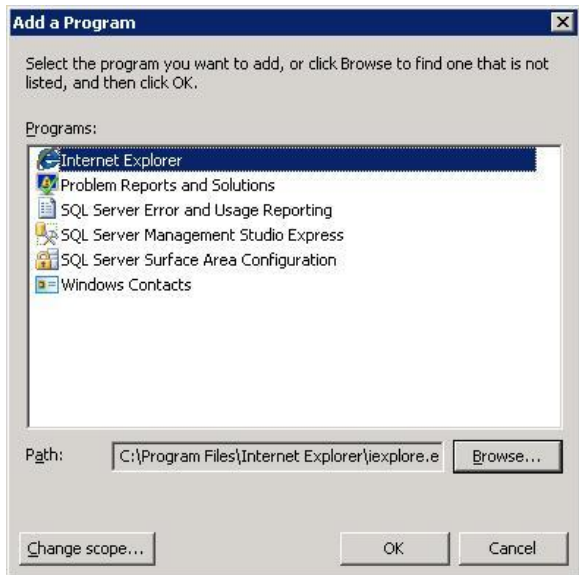


Figure 1.20(b) – Add a Program window

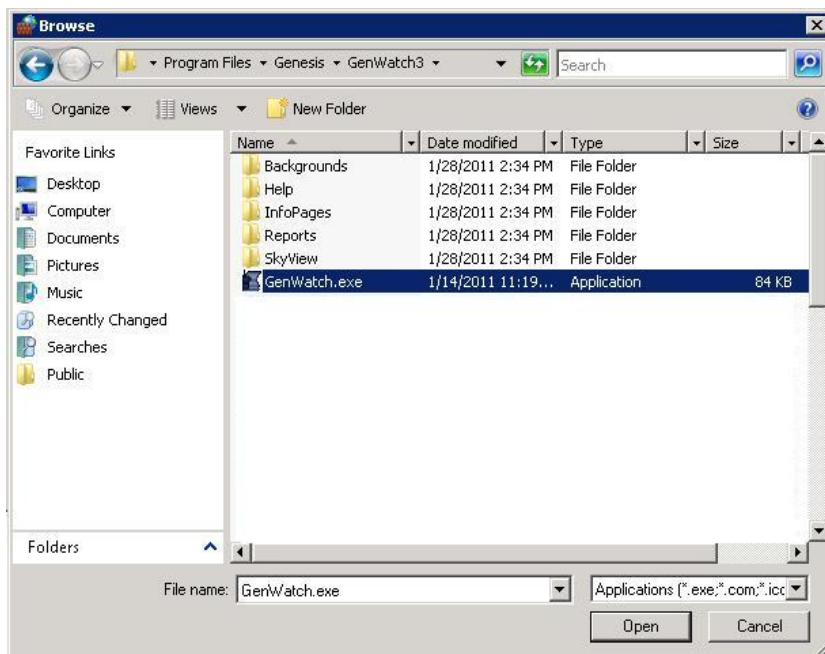




Figure 1.20(c) – File Browser

After you install GenWatch3 on your machine, you are ready to configure your GenWatch3 modules for operation on your system. Follow the steps below to configure GenWatch3:

- **Chapter 2:** Loading GW_Alerts
- **Chapter 2:** Logging into GW_Alerts
- **Chapter 2:** Loading GW_LaunchPad
- **Chapter 2:** Activating the GenWatch3 license (skip if your machine came pre-licensed)
- **Chapter 3:** Configuring the GW_Security module
- **Chapter 4:** Configuring the GW_Archiver module (if you purchased GW_Archiver)


Loading GW_Alerts

GW_Alerts is a System Tray application. This means that this application does not display a form while it is running. Instead, it shows an icon in the Windows System Tray (the bottom-right area of your desktop next to the time). GW_Alerts will show one of the following icons:

- : This icon indicates that the GW_Alerts application is running and is currently connected to the GenWatch3 service.
- : This icon indicates that the GW_Alerts application is running and is not currently connected to the GenWatch3 service.

The GenWatch3 Installer places a shortcut to GW_Alerts in the Startup folder of your **Windows Start** menu. This means that when Windows starts up (after reboot, power off, etc), Windows loads GW_Alerts automatically.

If you do not see one of the above icons in your Windows System Tray, you may need to start GW_Alerts. To start GW_Alerts take the following steps:

1. Click on the **Windows Start** button
2. Click on **All Programs** (or **Programs** in some versions of Windows)
3. Click on **Startup**
4. Click the GenWatch3 icon : This will load GW_Alerts and show one of the above icons in the System Tray.

Logging into GW_Alerts

The first step to running GW_Alerts is logging in. After you (or Windows) load GW_Alerts, you will see the following screen:

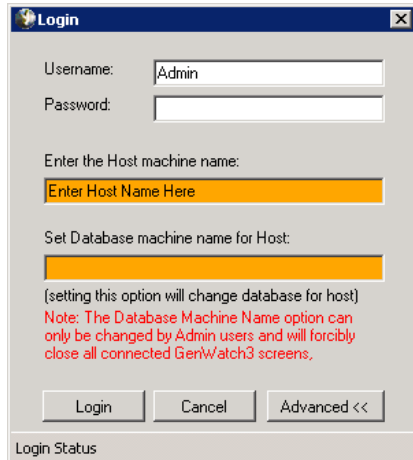



Figure 2.1 – GenWatch3 Login Screen

This screen contains the following items or note:

- **Username:** GenWatch3 user name you wish to login with. This box will contain the user name that last logged in.
- **Password:** Password of the GenWatch3 user entered in Username.
- **Host Machine Name:** Enter the GenWatch3 Host machine name here. This entry is “remembered” after the initial login.
- **Database machine name:** This is the machine that is hosting the GenWatch3 database. This entry is only required if you wish to change the database host.
- **Cancel:** Click this button to cancel login and not load GW_Alerts
- **Login:** Click this button once you have entered or verified the GenWatch3 database machine name, **Username**, and **Password**.
- **Advanced:** Displays or hides the host and database entry fields.



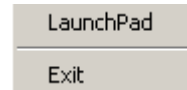
GenWatch3 uses your login information provided in this login screen for GW_LaunchPad and all other GenWatch3 screens. Click on the  button in GW_LaunchPad to change users.

Loading GW_LaunchPad

GW_LaunchPad is your entry point for GenWatch3, therefore important to all GenWatch3 users. From it you will launch all modules, configure database and host settings, and manage your license. GW_LaunchPad will automatically load each time you login to GW_Alerts.

To load GW_LaunchPad, follow the steps below:

1. Right-click on the GW_Alerts icon in the Windows System Tray (see above section for more information on GW_Alerts): This will show the GW_Alerts menu.
2. Click **LaunchPad** in the GW_Alerts menu: This will load GW_LaunchPad. (If you have not activated your license the GenWatch3 License Manager will load in place of GW_LaunchPad. See the section below to activate your license)



You can also load GW_LaunchPad by double-clicking the GW_Alerts icon in the Windows System Tray.

Activating the GenWatch3 License

You must activate the GenWatch3 license in order to evaluate GenWatch3 or to set the product as Released after you purchase a license. To activate your license for GenWatch3, follow the steps below:

1. Login to GW_Alerts. If GenWatch3 is not licensed, the *Activate Product(s)* window will load directly. If GW_LaunchPad loads, click the **View License** button and then **Activate Product(s)**.
2. Select the ENTIRE code in the **Request Code** box.
3. Right-click on the selected code: This will show an edit pop-up menu with options including **Copy**.
4. Choose **Copy** from the edit pop-up menu.
5. Open your email application and create a new email to Support@GenesisWorld.com.
6. Right-click in the body of the email: This will show an edit pop-up menu with options including **Paste**.
7. Choose **Paste** from the edit pop-up menu: This will paste your Request Code into the email exactly as it was on the *Activate Product(s)* window.
8. Also include in the email your company name and your contact information and/or GenWatch3 PO number.
9. Send the email.
10. Contact Genesis support (see the Support section of this manual): They will assist you with the rest of the activation process.

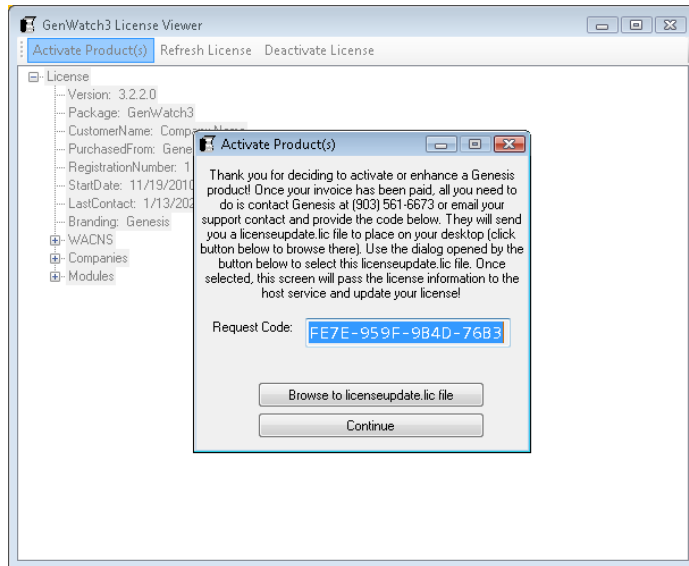


Figure 2.1 – GenWatch3 License Viewer

What is GW_Security?

The GW_Security module provides functionality for managing users of your GenWatch3 software. This includes creating, deleting, editing, and managing roles for users.

The GW_Security module provides the user *Admin* with a default password of *Genesis13*. The role of this user is to allow you to log into GW_LaunchPad and GW_Security with full administrator access. The first step here will be to change the password for the user Admin. This is important because anyone who reads this document will know the default password for Admin.



As with all passwords, keep your GenWatch3 password in a safe place! If you do lose or forget your Administrator password, you will need to get your Database administrator to log into SQL Server and reset the password for the Admin login.

Loading the GW_Security Edit Screen

Load the edit screen for the GW_Security module by following the steps below:


1. Launch the GW_LaunchPad (see *Loading GW_LaunchPad* in Chapter 2 of this book).
2. Locate the GW_Security module icon in the *Modules* list. The GW_Security module uses this icon:



3. Double-click the GW_Security icon: This will load the GW_Security GUI.

Changing the Password for the Admin User

Change the password for the Admin user by following the steps below:

1. Load the GW_Security GUI (see the above section).
2. Click the **Users** button on the left of the window: This will show the user administration panel to the right of the window.
3. Select the *Admin* user from the user list.
4. Click on the **Change Password** button.
5. When prompted, enter the current (initial) password for *Admin* (*Genesis13* by default).
6. Next, enter the desired new password and confirm the password.
7. Click **OK** to finish changing the password.
8. Close the GW_Security GUI by clicking the  button.

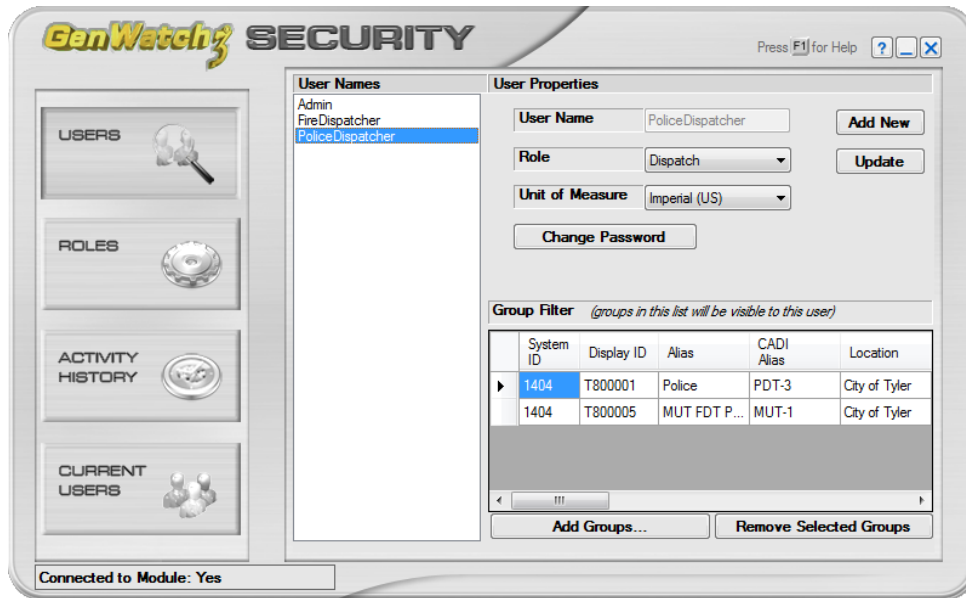


Figure 3.1 – GW_Security Screen



At this time you can create any other users that are necessary for your particular system. If not, you can always come back to the GW_Security module and create them later. For more information on the GW_Security module, see the *GenWatch3 Core Manual*.

What is GW_Archiver?

The GW_Archiver module stores control channel packets into data files. Each type of packet is stored in its own table within an SQL database. These databases are queried by the GenWatch3 Reporting Tools.

Since archiving is disk-intensive and can easily consume a large portion of your hard drive, all packet types are set not to archive by default. You will need to activate archiving for the packet types that you wish to store.

The section below describes how to activate archiving.

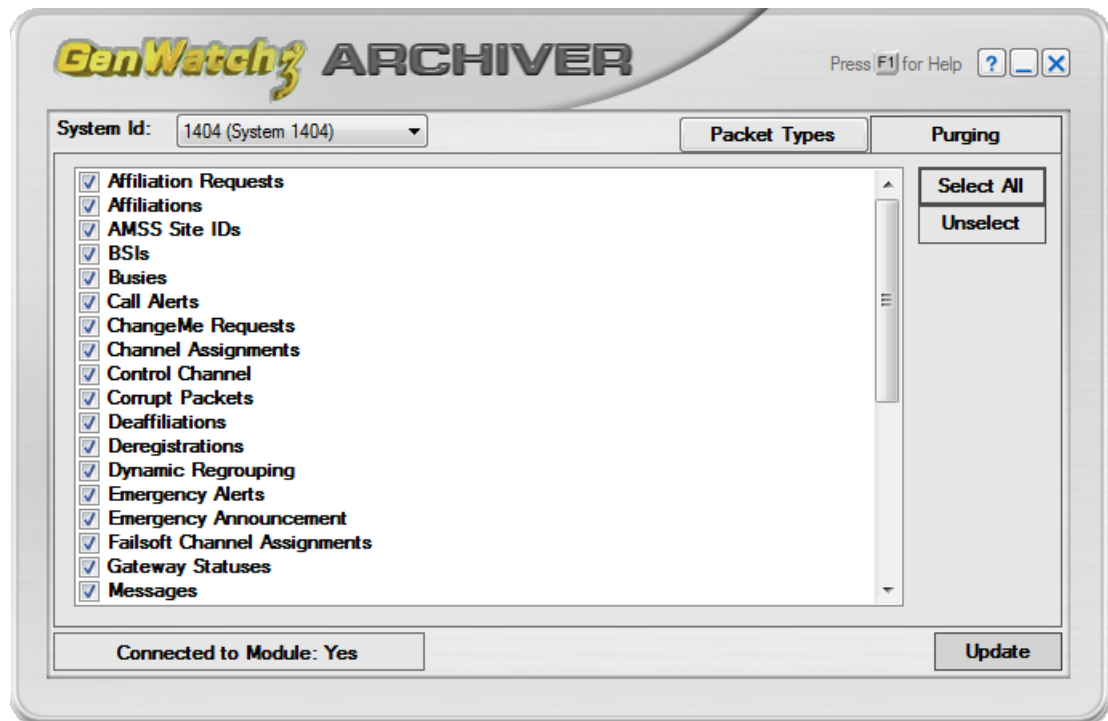


Figure 4.1 – GW_Archiver Screen

Loading the GW_Archiver Edit Screen

Launch the edit screen for the GW_Archiver module by following the steps below:

1. Launch the GW_LaunchPad (see *Loading GW_LaunchPad* in Chapter 2 of this book).
2. Locate the GW_Archiver module icon in the *Modules* list. The GW_Archiver module uses this icon:



3. Double-click the GW_Archiver icon: This will load the GW_Archiver GUI.

Choosing Archived Packet Types

The GW_Archiver GUI allows you to choose which packet types to archive. Selecting which packets to archive allows you to store the information you want for longer periods of time than if you were archiving everything. For instance, if you only cared about emergency alerts, you could likely store them for many times the life of your system, where if you were archiving everything, you could only store six months' to a year's worth, depending on your system activity.

Follow the steps below to select your archived packet types:

1. Click the **Packet Types** button. This will show the **Packet Types** panel.
2. Check the box for each packet type that you wish to archive. You can also click the **Select All** button to select all packet types.
3. Click the **Update** button.

Choosing Purging Options

The GW_Archiver module can purge each table in its SQL database at different intervals. Purging is the process by which old information is removed from the database in order to conserve disk space and to increase query efficiency. If you never want to purge a particular table, then leave that table's purging option as — *Never*—, otherwise, select the interval on which you wish to purge the table.



The options available in the **Purging** tab are limited by the GW_Archiver section of your GenWatch3 license. If you would like to archive data longer than your options allow, please contact GenWatch3 support to learn how to increase your archiving options.

In most situations, setting all tables to be purged at the same time is the best option, as it will give you a consistent view of your database (you will have the same timeframe in the database for all types of data). However, like with selectively archiving packets, you may be able to get more out of your disk space by selectively purging. For instance, if you really care about emergency alarms, you could set them to purge every year, and then set high throughput data, like calls and affiliations, to purge at one month. By purging high throughput data sooner, you are able to store other data types for longer periods.

Follow the steps below to setup archived data purging:

1. Click the **Purging** button. This will show the **Purging** panel.
2. Select the interval for each archive table, or set all purge intervals the same at the bottom of the panel.
3. Click the **Update** button.

Conclusion

Your GenWatch3 solution is now ready for input. Please refer to the GenWatch3 module book that pertains to your system's data stream. Refer to the list below for a list of system types and their related module books:

- **Motorola Type II SmartNet or Single-site SmartZone:** *GenWatch3 GW_RIMII Book.*
- **Motorola Type II/Dimetra SmartZone:** *GenWatch3 GW_ATIA Book.*
- **P25:** *GenWatch3 GW_RSP25 Book.*
- **AMNP:** *GenWatch3 GW_ANMP Book.*

If your GenWatch3 package includes the GW_Halcyon module (for RCM and CAD), please reference the following book for additional setup:

GenWatch3 GW_Halcyon Book