



**EzSaveWin
Quickstart Guide
Software Version 3.2**



Trademarks

The following are registered trademarks of Motorola: SmartZone, SmartNet.

Any other brand or product names are trademarks or registered trademarks of their respective holders.

The Genesis Group Trademark Information

EzSaveWin is a trademark of Burks Gencore Co., Inc. D.B.A. The Genesis Group and Phil Burks.

GenWatch3 is a registered trademark of GenCore Candeo, LTD., a subsidiary of Burks Gencore Co., Inc. D.B.A. The Genesis Group and Phil Burks.

Copyright

Copyright © 2011; Burks Gencore Co., Inc. D.B.A. The Genesis Group and Phil Burks. All rights are reserved. No part of this publication or the associated program may be reproduced, transmitted, transcribed, in whole or in part, in any form or by any means, whether it is mechanical, magnetic, optical, electronic, manual or otherwise, without the prior written consent of Burks Gencore Co., Inc. D.B.A:

The Genesis Group and Phil Burks
601 Shelley Dr., Suite 202
Tyler, Texas 75701.

Includes technology licensed from Motorola.

Disclaimer

The EzSaveWin Quickstart Guide is printed in the U.S.A. Burks Gencore Co., Inc. D.B.A. The Genesis Group and Phil Burks believe that the information included in this manual is correct; however, Burks Gencore Co., Inc. D.B.A. The Genesis Group and Phil Burks reserves the right to alter, revise and make periodic changes to the manual and its contents. Burks Gencore Co., Inc. D.B.A. The Genesis Group does not assume responsibility to notify any person of such revisions or changes. While we have taken strides to carefully examine our software and documentation and believe that it is reliable, the Genesis Group and Phil Burks assume no responsibility for the use of the manual, or EzSaveWin software, nor for any patent infringements or other rights of third parties who may use the manual or the EzSaveWin software. Burks Gencore Co., Inc. D.B.A. The Genesis Group and Phil Burks make no representations or warranties with respect to the contents or fitness for a particular purpose beyond the cost of the software paid by the end-user.

The software contains valuable trade secrets and proprietary information. Unauthorized use of the manual or software can result in civil damages and criminal prosecution. As an end user, you agree to abide by and heed these statements.

License

Title to the media on which the program is recorded and to the documentation in support of the product is transferred to you, but title to the program, and all subsequent copies of the program, despite the form or media in or on license is not a sale of the original or any subsequent copy. You assume responsibility for the selection of the program to achieve your intended results, and for the installation, use, and results obtained from the program.

Refer to the GenWatch3 Manual Overview for your full license. All license information contained on pages 4-7 (Book 600-2.0.4-AA.1) are to be considered as contained herein.

Support

Customer satisfaction is our number one priority at Genesis. We are here to provide you with the best software possible, and we want to know when you have any questions, concerns or problems with EzSaveWin so that we can make it a better product for everyone.

Refer to the Troubleshooting & Support section of this manual for complete support and contact information.

Document History

Revision	Description	Author
3.0.2	Initial Release	JPS
3.0.3	Minor corrections and updated screenshots	JPS
3.0.4	Minor updates	JPS
3.0.5	Release Revisions	
3.0.6	Release Revisions	
3.2	Release Revisions	CWF

Table of Contents

<i>Trademarks</i>	3
<i>The Genesis Group Trademark Information</i>	3
<i>Copyright</i>	3
<i>Disclaimer</i>	3
<i>License</i>	3
<i>Support</i>	3
DOCUMENT HISTORY	4
TABLE OF CONTENTS	5
ABOUT THIS MANUAL	7
GOALS	7
WHO SHOULD READ THIS MANUAL?	7
HOW THIS MANUAL IS ORGANIZED	7
CHAPTER 1 INSTALLING EZSAVEWIN	9
EZSAVEWIN SOFTWARE INSTALL	9
CHAPTER 2 LICENSING EZSAVEWIN	13
ACTIVATING THE EZSAVEWIN LICENSE.....	13
CHAPTER 3 ADDING A SYSTEM	15
<i>System Information</i>	17
<i>Connection</i>	17
Serial Connections	17
Modem Connections	17
TCP/IP Connections.....	18
<i>Save System</i>	18

Goals

This document guides you through the EzSaveWin setup process. After you complete the steps in this document, your EzSaveWin installation will be configured to connect to your central controller using a serial port.

Who Should Read This Manual?



This document is written for an audience with an understanding of computer and network administration.

How This Manual Is Organized

This manual is organized as follows:

- **Installing EzSaveWin:** Instructions on installing EzSaveWin.
- **Licensing EzSaveWin:** Instructions on licensing EzSaveWin.
- **Adding a System:** Instructions on adding a system to EzSaveWin.

This manual contains the following images, used to indicate that a segment of text requires special attention:

-  **Additional Information:** Additional information is used to indicate shortcuts or tips.
-  **Warning:** Warnings are used to indicate possible problem areas, such as a risk of data loss, or incorrect/unexpected functionality.

EzSaveWin Software Install

Perform the following steps to install the EzSaveWin software on the EzSaveWin PC. The Microsoft .NET Framework 2.0 and DirectX 9.0c must be installed prior to installing EzSaveWin. Once this has been installed, the installer will allow you to install EzSaveWin.



GenWatch3 Commander owners may install EzSaveWin only on the GenWatch3 Commander Host. Genesis has certified its operation only in this configuration. While EzSaveWin may operate in other configurations, Genesis will not support, warranty, or certify other configurations.



Is this for me? If EzSaveWin is already installed on the computer, you can skip this chapter.

1. Insert the EzSaveWin CD. If the installer does not automatically begin, browse to the CD's root directory and double-click on "setup.exe".
2. The Microsoft .NET Framework 2.0 and DirectX 9.0c are required for EzSaveWin to install and run. If they are not already installed on the EzSaveWin computer, the EzSaveWin installer will run the appropriate setup programs. Otherwise, the installation of EzSaveWin itself will automatically begin.
3. The EzSaveWin Installation should continue after installing the .NET Framework and/or DirectX. If not, simply double-click on the "setup.exe" file in the CD's root directory. The EzSaveWin Installation will continue and display the window shown in Figure 1.1.
4. This will show the *EzSaveWin Installation Welcome* Screen. (Figure 1.1) Click on the **Next** button to continue.

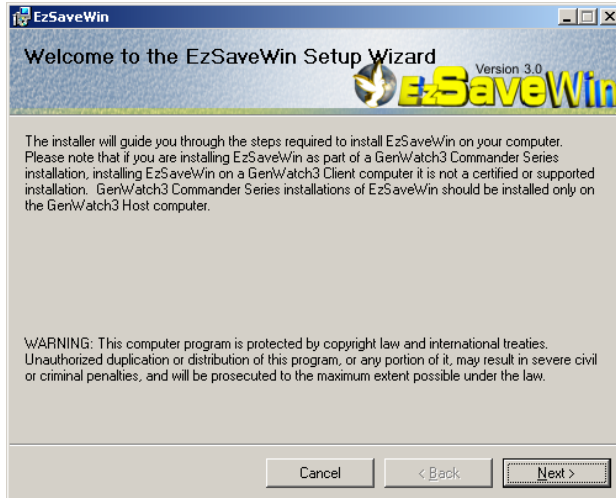


Figure 1.1 – EzSaveWin Installation Welcome Screen

5. This will show the *Select Installation Folder* screen. (Figure 1.2) This screen allows you to select the install path for EzSaveWin. Click the **Browse...** button to choose a non-default install path. You can also click the **Disk Cost...** button to view the amount of hard drive space required by this install and your current free space. When you are finished, click on the **Next >** button.

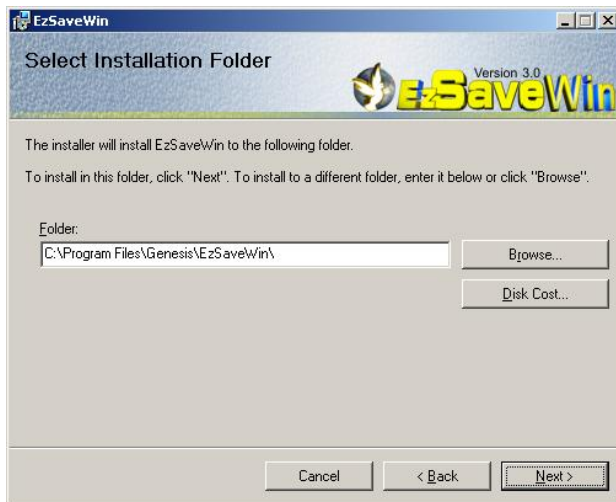


Figure 1.2 – Select Installation Folder Screen

6. This will show the *Confirm Installation* screen. (Figure 1.3) Click the **Next >** button to continue.

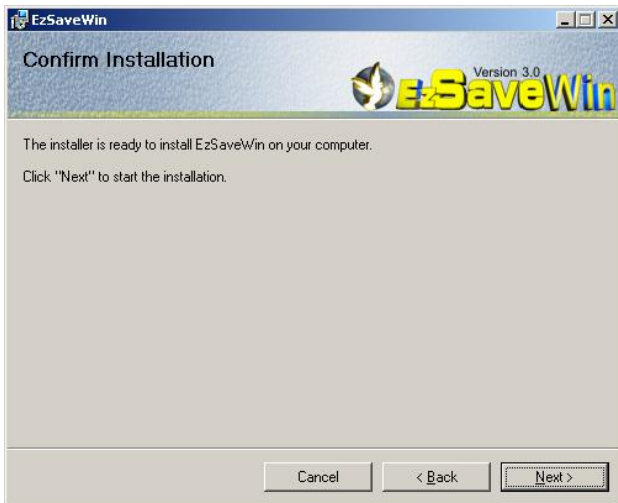


Figure 1.3 – Confirm Installation Screen

7. This will show the *EzSaveWin Installation Progress* screen. (Figure 1.4) When the installation completes, press the **Next >** button.

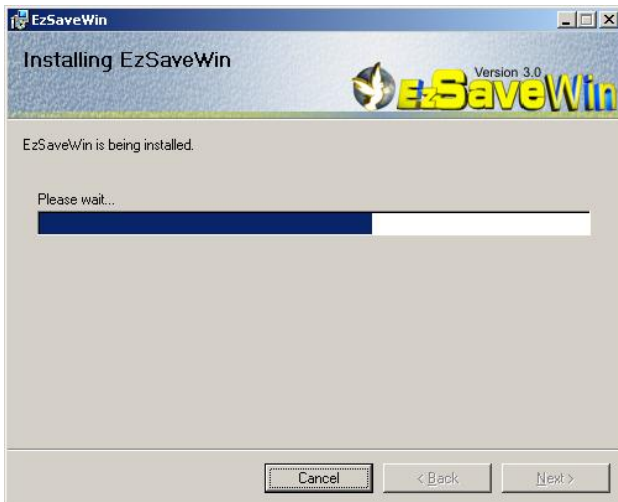


Figure 1.4 – Installation Progress Screen

8. This will show the *Installation Complete* screen. (Figure 1.5) Click the **Close** button to finish the installation.

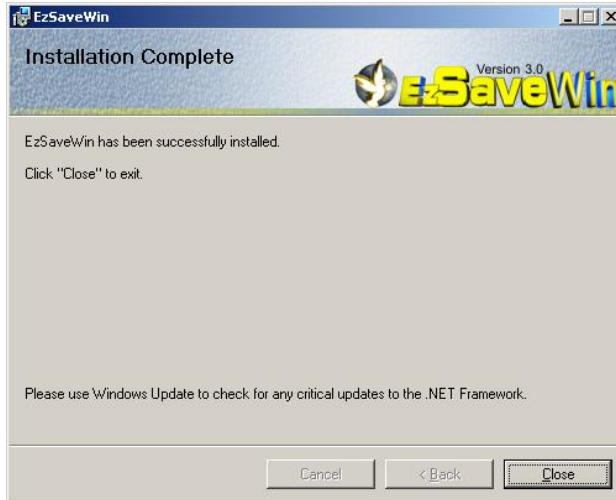


Figure 1.5 – Installation Complete Screen

9. The installation process creates a shortcut on your desktop to EzSaveWin. You will also find a shortcut under the Genesis section of the Start menu.

Activating the EzSaveWin License



Figure 2.1 – EzSaveWin License Manager



Is this for me? If you have a pre-installed EzSaveWin, you can skip this step. All other installations, evaluation or otherwise, need to perform the following steps.

To enable a demo, or to fully activate EzSaveWin after a purchase, follow the steps below:

1. Load EzSaveWin by double-clicking the EzSaveWin shortcut on your desktop.
2. Click the **Activate Product(s)** button toward the bottom-right of the *EzSaveWin License Manager* screen: This will show an *Activate Product(s)* screen.
3. Select the ENTIRE code in the Request Code box.
4. Right-click on the selected code: This will show an edit pop-up menu with options including **Copy**.
5. Choose **Copy** from the edit pop-up menu.
6. Open your email application and create a new email to Support@GenesisWorld.com.
7. Right-click in the body of the email: This will show an edit pop-up menu with options including **Paste**.
8. Choose **Paste** from the edit pop-up menu: This will paste your Request Code into the email exactly as it was on the *Activate Product(s)* screen.
9. Also include in the email your company name and your contact information and/or EzSaveWin PO number (if purchased).
10. Send the email.
11. Contact EzSaveWin support (see the Support section of this manual): The support person will assist you with the rest of the activation process.

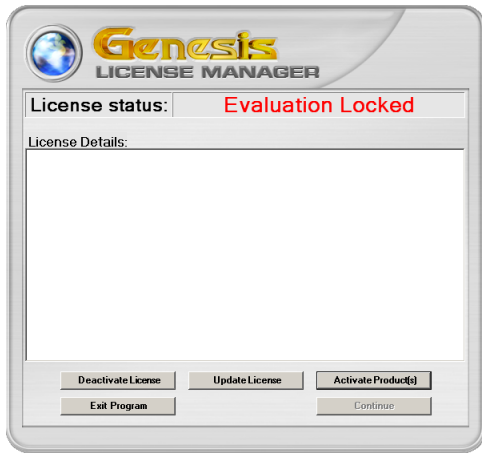


Figure 2.2 – EzSaveWin License Manager

To add your central controller to EzSaveWin, click the **Add New System** button of this screen. This will open a blank *Add New System* window. (Figure 3.2)

The *Add New System* window allows you to enter all information needed by EzSaveWin to communicate with the new controller.

Add New System
Version 3.0

Add New System

System

System Name: * Logon: Password:

System Number: * Controller: * SUBS Pwd:

Connection

Connect Using: *

Phone number: Host address: Port number:

Advanced

Hex Backup: Channels: Valid Options List:

ASCII Backup: Rollover Date: Hex SAC:

Time Zone: Hours Delay Ticks:

Backup Folder:

Reports Folder:

After Connect Send:

Last Date Connected: N/A
Last Time Connected: N/A

* Required Field

Figure 3.2 – Add New System window

System Information

To add your central controller, fill in the following fields:

- **System Name:** This can be any alphanumeric text describing the system. An easy to remember name, such as the location of the system, would be a good name. The System Name can be up to 255 characters in length.
- **System Number:** This is the official 4-digit hexadecimal System ID for the central controller as assigned by Motorola. This number must be the correct System ID, as it is used when communicating with the central controller. If the System ID is 5 digits, enter only the last 4.
- **Logon:** This is the Logon ID to be used by EzSaveWin to log in to the central controller. This can be MASTER, SYSTEM, BILLING, or CONTROL.
- **Controller:** This defaults to blank. If the central controller you are entering is the Main or Primary controller for a system, this must be set to *A*. If it is the Backup or Secondary controller, this must be set to *B*. EzSaveWin does not allow more than two central controllers with the same System Number to be entered. Additionally, there can be, at most, only one *A* controller and one *B* controller per System Number.
- **Password:** This is the password set in the central controller for the Logon ID entered in the Logon field. For security, the password itself is hidden.
- **SUBS Pwd:** If the central controller is a Type1 central controller, enter the SUBS password here. Again, for security, the password itself is hidden.



The red asterisks next to the **System Name**, **System Number**, **Controller**, and **Connect Using** fields denote that these fields are required and must be entered to save the central controller in EzSaveWin.

Connection

The connection section contains the device information necessary for EzSaveWin to know how to connect to the central controller.

- **Connect Using:** This dropdown box is automatically filled with the possible devices that can be used by EzSaveWin to connect to the central controller. Select the correct connection method from the dropdown.

Serial Connections

For serial connections, choose the correct COM port. Any serial ports between 1 and 64 found on the computer are displayed in the Connect Using list. The serial cable used between the EzSaveWin computer and the central controller must be a null-modem cable or have a null-modem adapter on it.

Modem Connections

Any modems connected/installed on the computer should be automatically detected and displayed in the **Connect Using** list. After selecting a modem, enter the phone number required to dial the central controller.

TCP/IP Connections

After selecting the TCP/IP method, enter the **Host Address** and **Port** to be used to connect to the central controller.

Save System

All other settings in the *Add New System* window are set to defaults and, for most central controllers, will not need to be changed. Refer to the EzSaveWin Manual (Document 200.3.0.4.A-1) for more detailed information about these options and whether they need to be changed for your system.

Click the **Save** button to finish adding the system to EzSaveWin. Before connecting to your central controller, verify that the EzSaveWin computer is connected properly to the central controller. If EzSaveWin will be connected via modem, ensure that the central controller is connected to its modem, that the EzSaveWin computer has a phone line connected to its modem, and that the correct phone number has been entered in EzSaveWin. If connecting via a serial port, ensure that the appropriate cable is connected to the central controller and that it is also connected to the correct serial port on the EzSaveWin computer. Once the physical connection has been verified, you will be able to connect to your central controller using the **Connect** button in the main screen of EzSaveWin.