



Appendix C
GenFIT
Software Version 2.2

GenWatch³

600-2.2.0-JJ.1
3/1/2011

Trademarks

The following are registered trademarks of Motorola: SmartZone, SmartNet, ASTRO®.

Any other brand or product names are trademarks or registered trademarks of their respective holders.

The Genesis Group Trademark Information

GenWatch3® is a registered trademark of GenCore Candeo, LTD., a subsidiary of Burks Gencore Co., Inc. D.B.A. The Genesis Group and Phil Burks.

Copyright

Copyright © 2011; Burks Gencore Co., Inc. D.B.A. The Genesis Group and Phil Burks. All rights are reserved. No part of this publication or the associated program may be reproduced, transmitted, transcribed, in whole or in part, in any form or by any means, whether it is mechanical, magnetic, optical, electronic, manual or otherwise, without the prior written consent of Burks Gencore Co., Inc. D.B.A:

The Genesis Group and Phil Burks
601 Shelley Dr., Suite 202
Tyler, Texas 75701.

Includes technology licensed from Motorola.

Disclaimer

The GenWatch3 Users Manual is printed in the U.S.A. Burks Gencore Co., Inc. D.B.A. The Genesis Group and Phil Burks believe that the information included in this manual is correct; however, Burks Gencore Co., Inc. D.B.A. The Genesis Group and Phil Burks reserves the right to alter, revise and make periodic changes to the manual and its contents. Burks Gencore Co., Inc. D.B.A. The Genesis Group does not assume responsibility to notify any person of such revisions or changes. While we have taken strides to carefully examine our software and documentation and believe that it is reliable, the Genesis Group and Phil Burks assume no responsibility for the use of the manual, or GenWatch3 software, nor for any patent infringements or other rights of third parties who may use the manual or the GenWatch3 software. Burks Gencore Co., Inc. D.B.A. The Genesis Group and Phil Burks make no representations or warranties with respect to the contents or fitness for a particular purpose beyond the cost of the software paid by the end-user.

The software contains valuable trade secrets and proprietary information. Unauthorized use of the manual or software can result in civil damages and criminal prosecution. As an end user, you agree to abide by and heed these statements.

License

Title to the media on which the program is recorded and to the documentation in support of the product is transferred to you, but title to the program, and all subsequent copies of the program, despite the form or media in or on license is not a sale of the original or any subsequent copy. You assume responsibility for the selection of the program to achieve your intended results, and for the installation, use, and results obtained from the program.

Refer to the GenWatch3 Manual Overview for your full license. All license information contained on pages 4-7 (Book 600-2.2.0-AA.1) are to be considered as contained herein.

Support

Customer satisfaction is our number one priority at Genesis. We are here to provide you with the best software possible, and we want to know when you have any questions, concerns or problems with GenWatch3 so that we can make it a better product for everyone.

Refer to the *Troubleshooting & Support* section of the GenWatch3 Manual Shell (Book 600-2.2.0-AA.1) for complete support and contact information.

Document History

Revision	Description	Author
2.0.3	Initial Release	CBH
2.0.4	Updates for 2.0.4	JPS
2.0.5	Release revisions	JAW
2.0.6.6	Revision before release	CLB
2.1	Revision before release	WRK
2.2	Document reviewed	WRK

Table of Contents

<i>Trademarks</i>	3
<i>The Genesis Group Trademark Information</i>	3
<i>Copyright</i>	3
<i>Disclaimer</i>	3
<i>License</i>	3
<i>Support</i>	3
DOCUMENT HISTORY	4
TABLE OF CONTENTS	5
ABOUT THIS MANUAL	7
GOALS	7
WHO SHOULD READ THIS MANUAL?	7
HOW THIS MANUAL IS ORGANIZED	7
CHAPTER 1 OVERVIEW	9
WHAT IS GENFIT?.....	9
HOW IS GENFIT USED?.....	9
CHAPTER 2 INSTALLATION	11
INSTALLATION.....	11
CHAPTER 3 GETTING STARTED	15
CREATING A GW_RIMII CONNECTION	15
CREATING A GW_RSP25 CONNECTION	15
VERIFYING CONNECTIVITY	17
CREATING A LICENSE	17
RIM-II HARDWARE SETUP	19
RSP25 HARDWARE SETUP	20
STARTING GENFIT	21
<i>For Rim-II Connections</i>	21
<i>For RSP25 Connections</i>	22
DISCONNECTING.....	23
CHAPTER 4 OPERATION	25
ACTIVITY VIEW	26
ACTIVITY FILTERING	26
<i>Suppressing Duplicate Packets</i>	26
<i>Packet Throttling</i>	27
<i>Filtering Packet Types</i>	27
CHANNEL VIEW	28
BUSIES VIEW	28
MESSAGE PANEL	28
PACKET INFORMATION	29
RUN-TIME INDICATOR.....	30

Goals

This manual describes the role and function of the GW_GenFIT tool in the GenWatch3 solution.

Who Should Read This Manual?



This manual is written for the intended audience of novice to mid-level Motorola trunked radio system users and novice to mid-level PC users. This manual assumes the audience knows how to start GenWatch3 and open the GW_LaunchPad, logged in as the Admin user.

How This Manual Is Organized

This manual is organized as follows:

- **Overview:** Describes briefly what GenFIT is and its intended use.
- **Installation:** Describes how to install GenFIT.
- **Getting Started:** Describes how to license GenFIT for use.
- **Operation:** Describes how to utilize GenFIT's functionality.

This manual contains the following images, used to indicate that a segment of text requires special attention:

-  **Additional Information:** Additional information is used to indicate shortcuts or tips.
-  **Warning:** Warnings are used to indicate possible problem areas, such as a risk of data loss or incorrect/unexpected functionality.

This chapter briefly describes GenFIT, its functionality and its intended use.

This chapter contains the following sections:

- **What is GenFIT?:** Describes GenFIT's purpose and functionality.
- **How is GenFIT used?:** Describes GenFIT's intended use.

What is GenFIT?

The name GenFIT stands for **Genesis Field Investigation Tool**. GenFIT is a stand-alone diagnostic tool, designed to provide basic “in-the-field” functionality similar to that of GenWatch3 modules GW_Activity and GW_Channel.

How is GenFIT used?

GenFIT's compact design enables it to be installed on a laptop (or similar device) and used out in the field as a convenient diagnostic resource. GenFIT operates on a license for a single site for a set length of time. GenFIT is used in conjunction with an RF-modem and a RIM-II or RSP25 device in order to receive data.

This chapter covers the process of installing GenFIT and contains the following sections:

- **Installation:** Describes the procedure for installing GenFIT.

Installation

The GenFIT Installation package contains the following files:

- **GenFITInstaller.msi:** Contains the GenFIT installation files.
- **Setup.exe:** Checks for prerequisites and begins installation.

Double-click **setup.exe** to launch the GenFIT installation. The installation will first verify that the Microsoft .Net Framework 4.0 has been installed on the machine. GenFIT cannot be installed if this prerequisite is missing.

The first installation window is the *Welcome* window as shown in Figure 2.1. Click **Next** to continue. Click **Cancel** on any window to exit the installation.



Figure 2.1 – Welcome Window

The *Select Installation Folder* window, shown in Figure 2.2, displays the installation folder. If you would like to change this folder, click the **Browse** button. To view the disk space usage and requirements, click the **Disk Cost** button shown in Figure 2.3. GenFIT will be installed for all users. Click **Next** to continue.

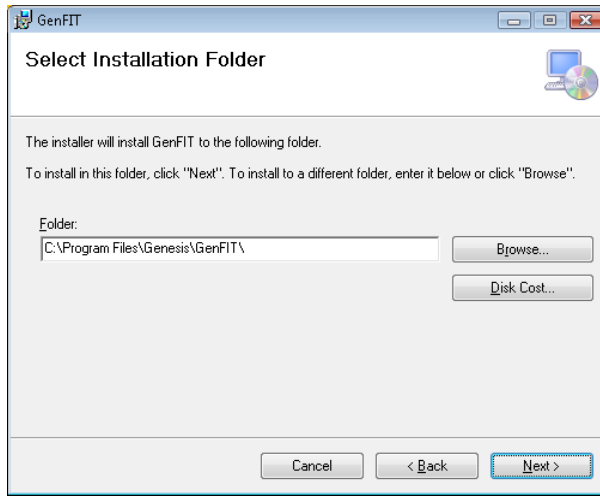


Figure 2.2 – Installation Folder Window

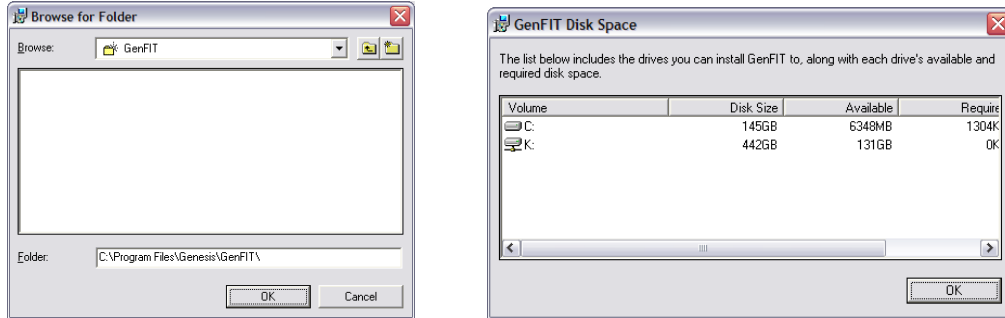


Figure 2.3 – Browse Dialog & Disk Cost Dialog

The *Confirm Installation* window is shown in Figure 2.4. Click **Next** to proceed with the installation. Click **Back** to change installation options.

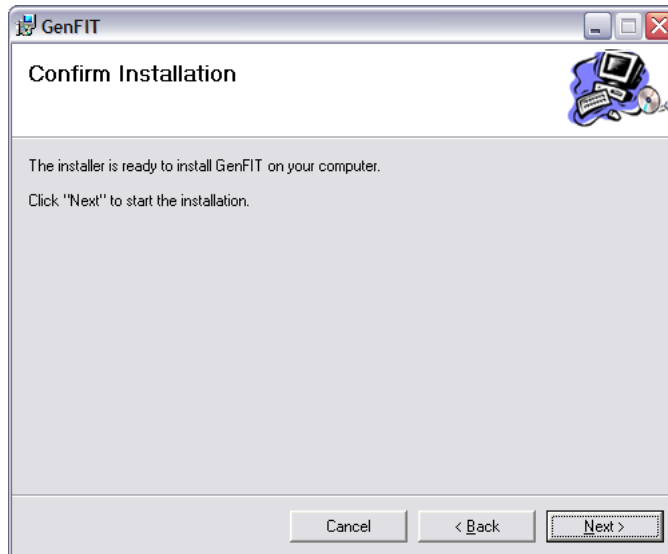


Figure 2.4 – Confirm Installation Window

The *Installing GenFIT* window, shown in Figure 2.5, is displayed while program files are being transferred.

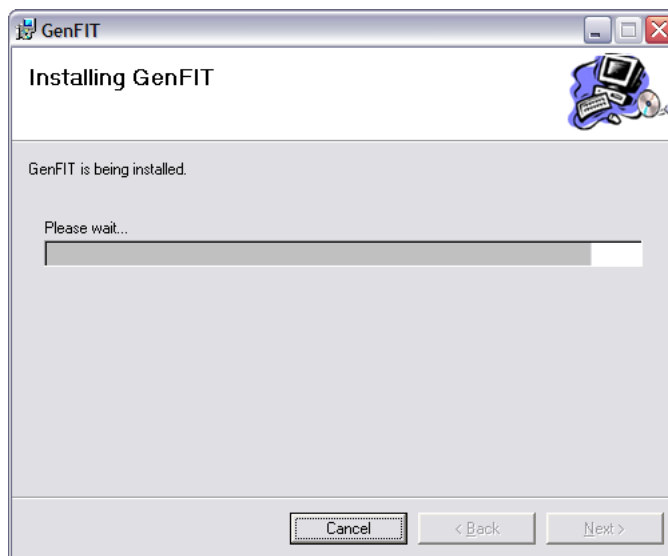


Figure 2.5 – Installing Window

Figure 2.6 shows the *Installation Complete* window. GenFIT program files have been installed and are ready to use. Click **Close** to exit the installation.

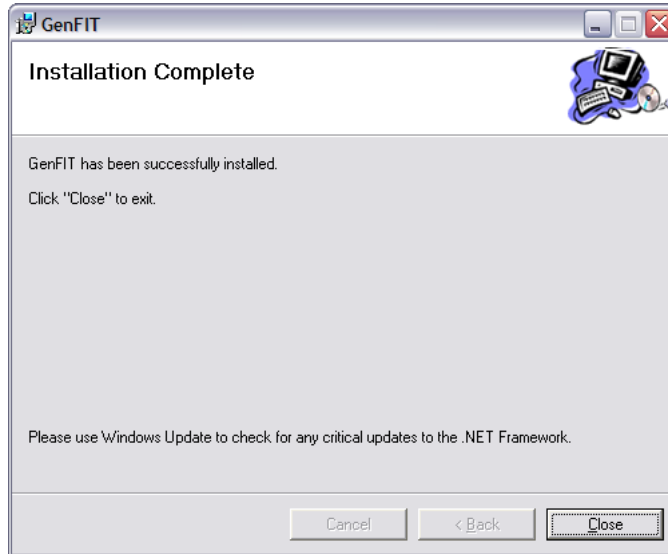


Figure 2.6 – Installation Complete Window



The GenFIT Installer package places a shortcut on the desktop for convenience.

This chapter describes how to properly license, start and connect GenFIT to either a Rim-II or an RSP25 packet source.

This chapter contains the following sections:

- **Creating a GW_RIMII Connection:** Describes how to start the GW_RIMII module and configure a packet source.
- **Creating a GW_RSP25 Connection:** Describes how to start the GW_RSP25 module and configure a packet source.
- **Verifying Connectivity:** Describes how to ensure a connection works.
- **Creating a License:** Describes how license to GenFIT for a connection.
- **Starting GenFIT:** Describes how to start and connect GenFIT.
- **Disconnecting:** Describes how to disconnect from a Rim-II packet source.



In order to complete the steps listed and license GenFIT, the user must be logged in as the Admin user in GenWatch3. If not logged into GenWatch3 as the Admin user, the user will not be able to generate a GenFIT license.

Creating a GW_RIMII Connection

To receive packets from a packet source, you must add a connection. To load the GW_RIMII Graphical User Interface (GUI) and add a GW_RIMII connection, take the following steps:

1. Locate the GW_RIMII module icon in the *Modules* list. The GW_RIMII module uses this icon:



2. Double-clicking the GW_RIMII icon will load the GW_RIMII GUI.
3. Click the **Add** button: GW_RIMII will show the default settings for a new connection and a **Connection Alias** value of something similar to *new connection 1*.
4. Change the connection properties to the desired values.
5. Click the **Update** button.

Creating a GW_RSP25 Connection

To receive packets from a packet source, you must add a connection. To load the GW_RSP25 GUI and add a GW_RSP25 connection, take the following steps:

1. Locate the GW_RSP25 module icon in the *Modules* list. The GW_RSP25 module uses this icon:



2. Double-clicking the GW_RSP25 icon will load the GW_RSP25 GUI.
3. Click the **Add** button: GW_RSP25 will show the default settings for a new connection and a **Connection Alias** value of something similar to *new connection 1*.
4. Change the connection properties to the desired values.
5. Click the **Update** button.

Verifying Connectivity

Since a connection cannot be changed or updated in GenFIT itself, it is important to verify the connection works now, before heading out into the field.

1. Verify there is a green activity icon (🟢) in the system tray (bottom-right corner of windows, next to the time). In case you have multiple connections, hover over the icons to verify the packet source you intend to use for GenFIT is connected. A red activity icon (🔴) in the system tray indicates the connection has not received packets within the last 5 seconds, so return to *Creating a Connection* and double-check each connection property. See the GW_RIMII or GW_RSP25 manual for more details.
2. From GW_LaunchPad, open the GW_Activity module, which uses the following icon:



3. Click the **Select All** button in the top-right corner of the GW_Activity GUI.
4. Verify packets are being received from the desired system, zone, and site. Scroll to the right, if necessary, to see all fields of data for each packet in the activity list. If no packets from the desired site are being displayed, return to the previous sections, *Creating a GW_RIMII Connection* or *Creating a GW_RSP25 Connection* and double-check each connection property.

Creating a License

GenFIT supports multiple connections. In either GW_RIMII or GW_RSP25, notice the **Generate GenFIT License** button (Figure 3.1). Take the following steps to license an installation of GenFIT for use:

1. Click the **Generate GenFIT License** button.

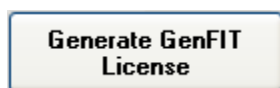


Figure 3.1 – The Generate GenFIT License button

2. Save the license file in a convenient location, such as the desktop. Do not modify the default filename (GenFIT.FitLicense.lic) in any way (see Figure 3.2).

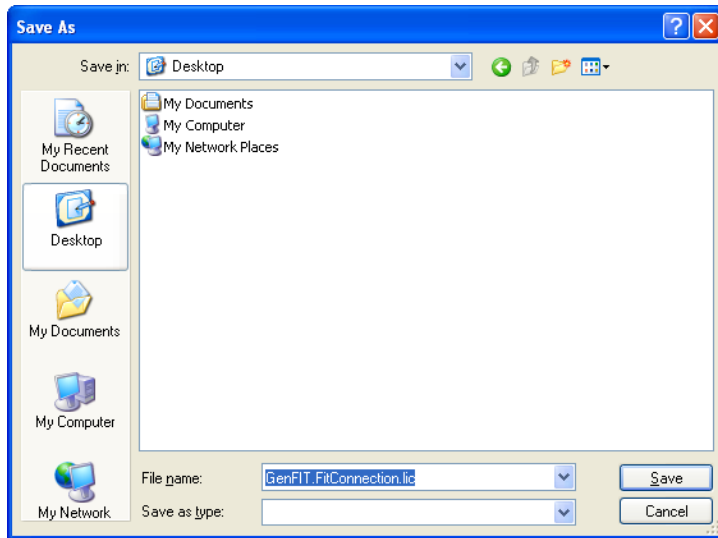



Figure 3.2 – Save As dialog with the default filename

3. Transfer the license file to the laptop or notebook PC with a USB Storage Device or via a network to which both the portable computer and GenWatch3 PC are connected.
4. Click **File -> Select License** menu item. This will open an *Open* dialog.
5. Select the license file copied over in step 3, then click the **Open** button.

GenFIT licenses have a maximum usage time of one week, or 168 hours. The usage time of the license decreases for each hour GenFIT is used. When the lifespan expires, the license can no longer be used.

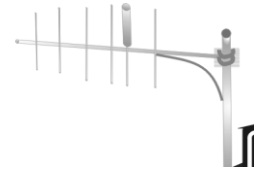
 GenFIT licenses can be thought of as batteries, which are drained as GenFIT is used. To use GenFIT more, or for a different connection, recharge by re-licensing GenFIT in the GW_RIMII or GW_RSP25 module.

Rim-II Hardware Setup

Radio: The radio needs to be an RF-modem capable model with appropriate version RF-modem support firmware. This includes radio models such as the Spectra or MCS2000. Within the radio, the RF-modem feature must be enabled.

Power: A standard Control Station power supply can be used to power the RF-modem radio. The RIM-II gets its power from the radio through the standard cable.

Antenna: The radio must be installed within range of the Trunk System. A high gain, Yagi style directional antenna is recommended for all installations. Good coax design is required between the antenna and the radio. In order to minimize phasing interference in a Simulcast trunking system, the use of a Yagi directional antenna is of utmost importance.



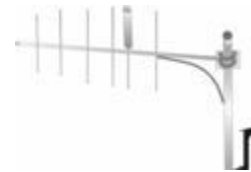
Connection to the PC: The RF-modem radio is connected to a Motorola RIM-II device via a cable supplied with the RIM-II. The RIM-II is connected to the PC by way of an RS-232 cable supplied with the RIM-II. If necessary, this cable may be extended, but a cable length over 50 feet (15 meters) is not recommended. If a farther separation distance is required, there are many companies that offer devices that can extend an RS-232 connection up to many miles with no degradation in speed or reliability. One source is Black Box Corporation, <http://www.blackbox.com>. Use good data standards to decide if shielded cable is required for a particular situation and RF environment.

RSP25 Hardware Setup

Radio: The radio must be an EF Johnson digital transceiver capable of outputting P25 control channel data. This data is contained in Outbound Signaling Packets. The EF Johnson RS-5300 and 53SL mobile radios are digital transceivers.

Power: A standard EFJohnson power supply can be used to power the transceiver. To ensure reliability, an Uninterruptible Power Supply (UPS) should be considered.

Antenna: The radio must be installed within range of the Trunk System. A high gain, Yagi style directional antenna is recommended for all installations. Good coax design is required between the antenna and the radio. In order to minimize phasing interference in a Simulcast trunking system, the use of a Yagi directional antenna is of utmost importance.



Connection to the PC: The transceiver is connected to the computer using one of two methods.

- If the transceiver has the Topaz Interface enabled, a TCP/IP connection will be used to receive data from the radio. Standard networking equipment and cables can be used connect to the PC.
- If the transceiver is connected via serial port, the EFJ Remote Programming Interface (RPI) can provide a PC connection through the PTT port on the front of the transceiver. At least one Remote Programming Interface is required to program the transceiver.

A serial connection to the PC is completed by a DB9 RS-232 cable. If necessary, this cable may be extended; however, a cable length over 50 feet (15 meters) is not recommended. If a farther separation distance is required, there are many companies that offer devices that can extend an RS-232 connection up to many miles with no degradation in speed or reliability. One source is Black Box Corporation, <http://www.blackbox.com>. Use good data standards to decide if shielded cable is required for a particular situation and RF environment.

Starting GenFIT

To start GenFIT, take the following steps:

1. Double-click the GenFIT shortcut located on the desktop by default.
2. On the main menu, navigate to and check **Connection** → **Start Connection** from the menu as shown in Figure 3.3.

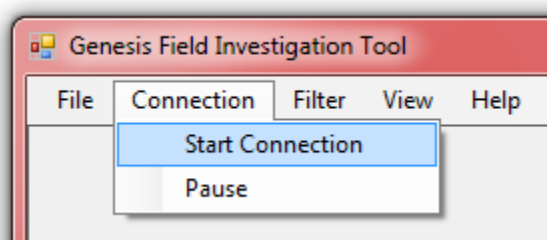


Figure 3.3 – Unchecked **Start Connection** menu item, indicating no connection.

3. If GenFIT was licensed for more than one connection, you will be presented with the *Choose a Connection* dialog box (Figure 3.4). Choose a connection from the dropdown list and click **OK**. If GenFIT was only licensed for a single connection, this dialog will not be displayed, and you may skip to step 4 from either the Rim-II or RSP25 sections below.

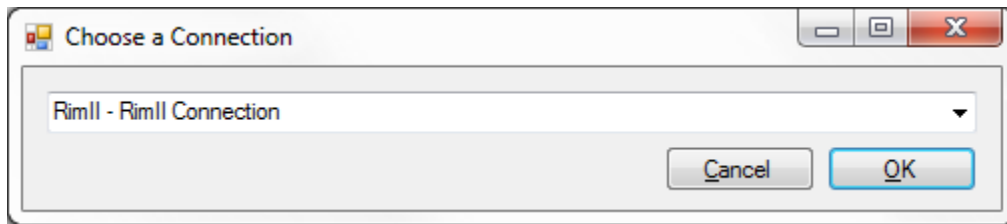


Figure 3.4 – *Choose a Connection* dialog

For Rim-II Connections

4. On the **Rim-II Settings** dialog that appears, select from the list provided, the Serial port on which the site feed is connected to the laptop.
5. Click **OK** on the **Rim-II Settings** dialog as shown in Figure 3.5.

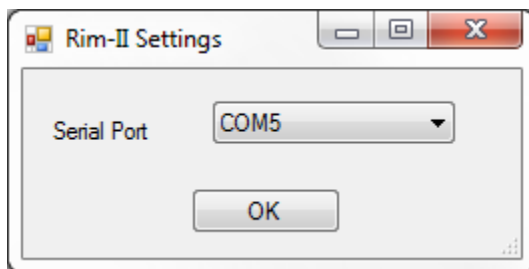


Figure 3.5 – *Rim-II Settings* dialog

For RSP25 Connections

4. On the **RSP25 Settings** dialog that appears, select “Serial” and the serial port on which the site feed is connected to the laptop, or choose Millennium.
5. Click OK on the RSP25 Settings dialog as shown in Figure 3.6.

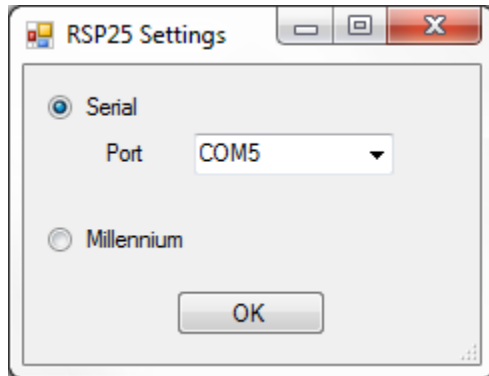


Figure 3.6 – *RSP25 Settings* dialog

Activity on the site GenFIT is licensed for will now appear as packets, scrolling in the **Activity** view.

Disconnecting

To disconnect from a packet source, navigate to and unselect **Connection** → **Start Connection**, as shown in Figure 3.7.

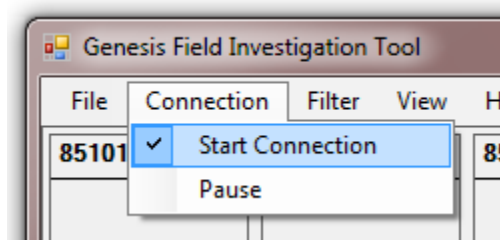


Figure 3.7 – Checked **Start Connection** menu item, indicating a connection.

This chapter describes the functionality of and information displayed by GenFIT.

This chapter contains the following sections:

- Activity View
- Channel View
- Busies View
- Packet Information
- Run-Time Indicator



The information visible in both the activity and channel view is archived, but closing GenFIT will result in all visual elements (such as scrolling activity or channel blocks) being lost.

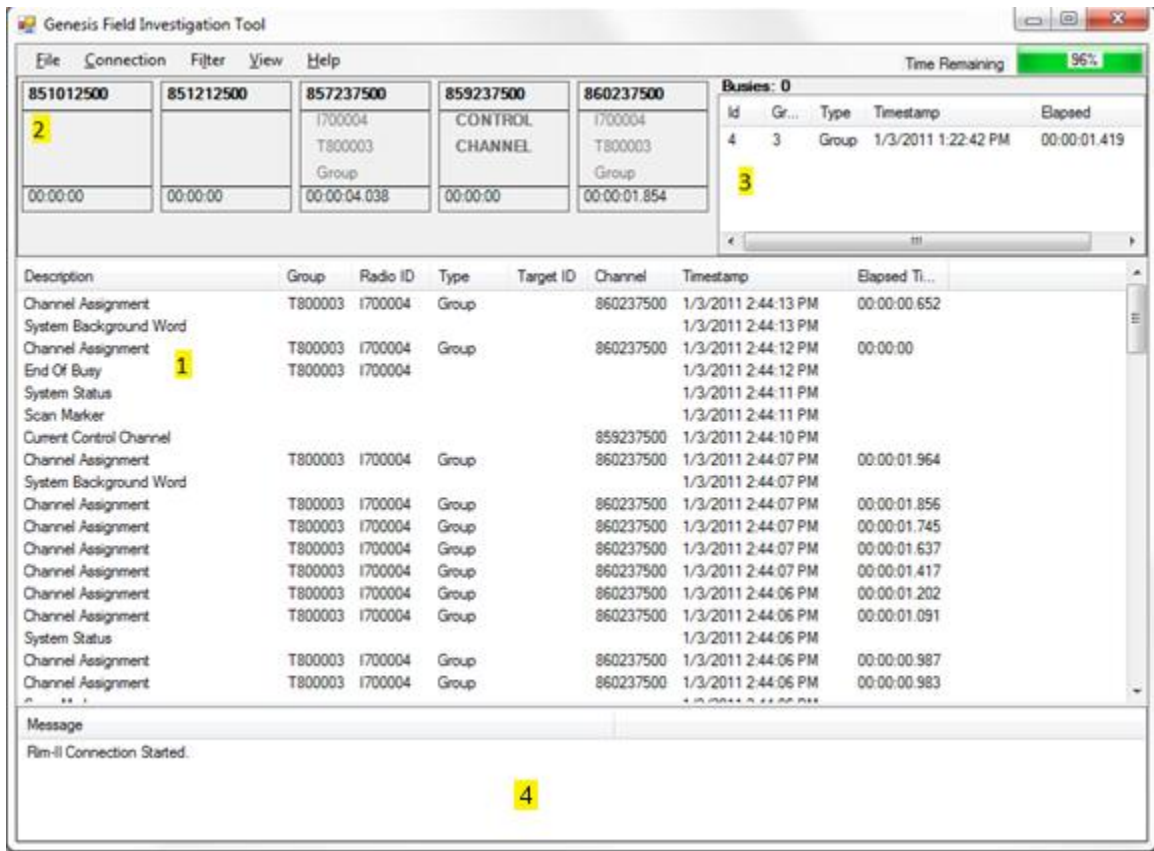


Figure 4.1 – The GenFIT GUI.

Activity View

The *Activity* view, shown as area 1 in Figure 4.1, scrolls system activity packets in real-time, displaying the following fields of information for each packet received on the licensed packet source:

- **Description:** Broad category of the activity (i.e. Affiliation, Status, Message, etc.).
- **Group:** Target group (if any) of the activity.
- **Radio ID:** Originating radio ID (if any) of the activity.
- **Type:** Activity subcategory. Further describes the type of activity.
- **Target ID:** This will contain one of the following values, if the value is provided in the packet:
 - **Target Radio ID:** For call alerts, private calls, etc.
 - **Target Supergroup:** For dynamic regrouping.
 - **Diagnostic Condition Description:** For system diagnostics.
 - **Message Number:** For messages.
 - **Status Number:** For statuses.
 - **Reason:** For rejects, corruption, etc.
- **Channel Frequency:** The frequency of the channel the activity took place on. For multi-site based data, this column will be empty.
- **Time Stamp:** The date and time when the activity was received or originated. This will be the packet time stamp for packets that include a time stamp. Otherwise it will be the date and time the packet was received by the input module.
- **Elapsed Time:** The duration of the activity. Only calls and busies provide an elapsed time value.



Use the pause feature in the activity view to immediately stop the scrolling of packet data and leave existing data in the activity list.

Activity Filtering

Suppressing Duplicate Packets

Some input sources echo activity packets in triplicate and quadruplicate. Showing more than one instance of each of these activities is rarely desired. To enable/disable duplicate packets check/uncheck the **Suppress Duplicates** menu option in the **Filter** menu by clicking on that menu option.



This option has no effect on many multi-site packets, as these packets are generally not sent in duplicate, triplicate, etc.

Packet Throttling

Throttling ensures that GenFIT will not display a distinct input packet more than once per second. To enable/disable packet throttling check/uncheck the **Throttle** menu option in the **Filter** menu by clicking on that menu option.



This option has no effect on many multi-site packets, as these packets are generally not sent in duplicate, triplicate, etc.

Filtering Packet Types

GenFIT maintains a list of **Packet Types** that shows all packet types encountered by GenFIT so far. This list will start off empty and will add new packet types as they are received by GenFIT. New packets types will default to checked (Included) in the **Packet Types** list. All checked packet types will appear in the *Activity List* as they are received. Packet types that are unchecked will not be shown in the *Activity List*. To open the Packet Type Filter Settings dialog, shown in figure 4.2, click **By Packet Type** in the **Filter** menu.

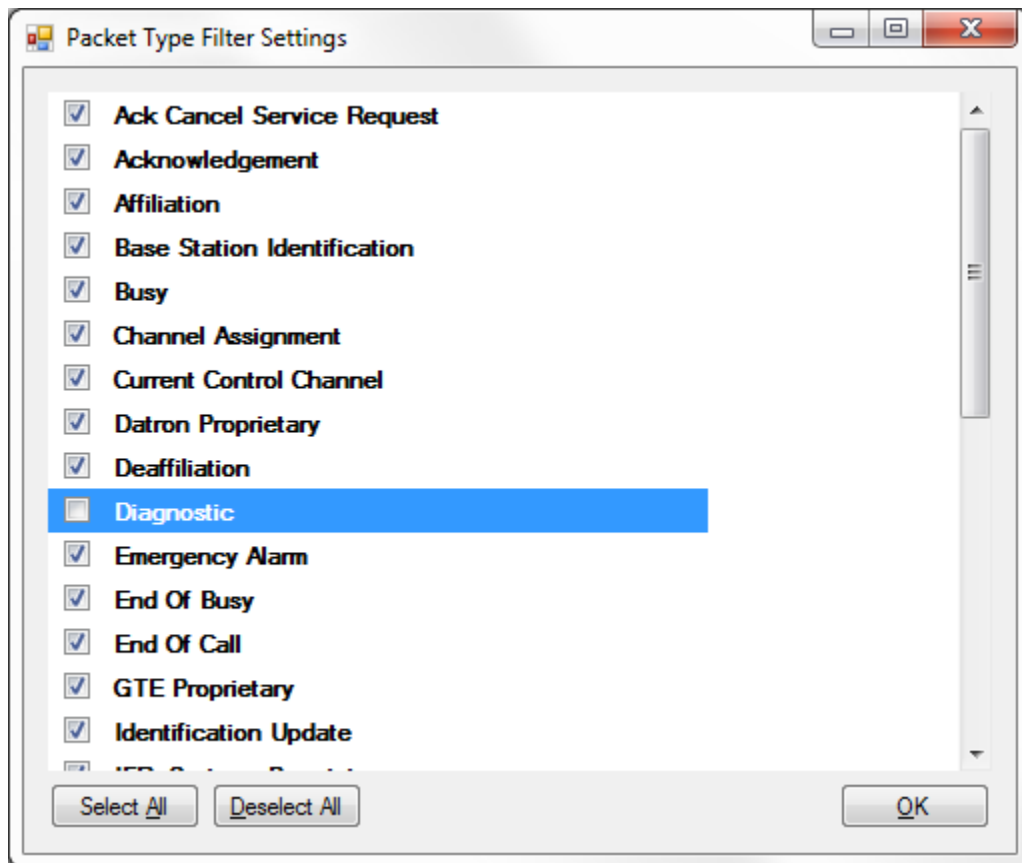


Figure 4.2 – *Packet Type Filter Settings* dialog

Channel View

The *Channel* view displays decoded channel activity and call information for each channel at a given site, shown as area 2 in Figure 4.1. The following fields of information for call activity are displayed on the appropriate channel block:

- **Radio ID:** Originating radio ID (if any) of the activity.
- **Talkgroup ID:** Group (if any) on which the busy call took place.
- **Elapsed Call Time:** The duration of the activity. Only calls and busies provide an elapsed time value.
- **Channel Frequency:** The frequency of the channel the activity took place on. For multi-site based data, this column will be empty.

Busies View

The *Busies* view, shown as area 3 in Figure 4.1, displays a history of busy packets. The following fields of information for busies are displayed from each busy packet:

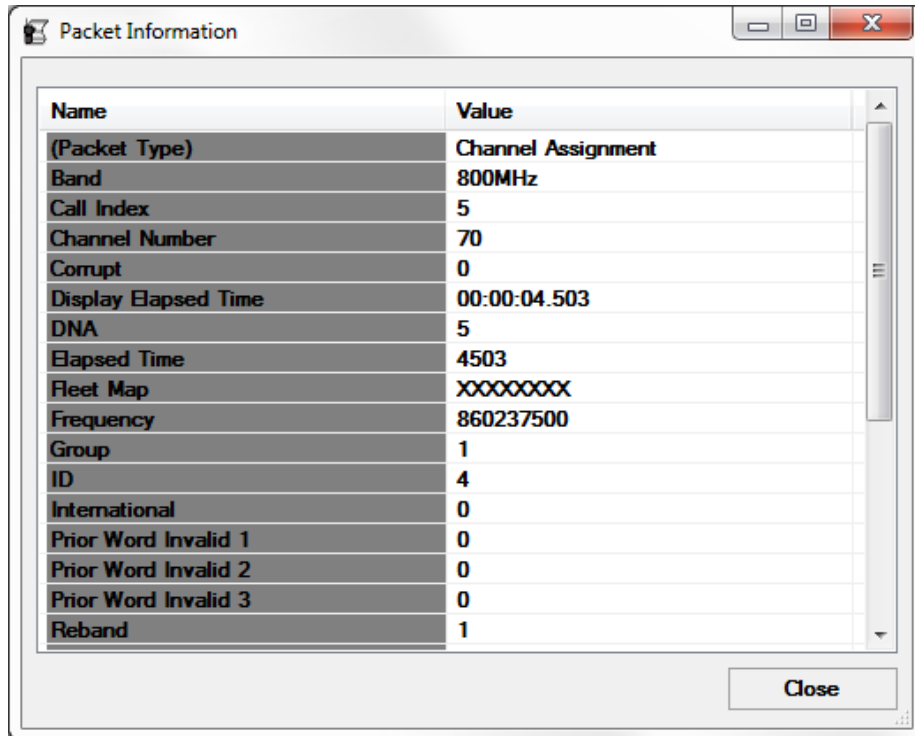
- **ID:** Originating radio ID (if any) of the busy.
- **Group:** Group (if any) on which the busy call took place.
- **Type:** Activity subcategory. Further describes the type of activity.
- **Time Stamp:** The date and time when the busy was received or originated. This will be the packet time stamp for packets that include a time stamp. Otherwise it will be the date and time the packet was received by the input module.
- **Elapsed Time:** The duration of the busy.

Message Panel

The *Message* panel, shown as area 4 in Figure 4.1, displays messages for errors, and to indicate when a connection is started or stopped.

Packet Information

In either *Activity* view or *Channel* view, it is possible to see additional information about a call or event by double-clicking on a list item or channel respectively.



The screenshot shows a window titled "Packet Information" with a standard Windows-style title bar (minimize, maximize, close). The main content is a table with two columns: "Name" and "Value". The table lists various packet attributes and their corresponding values. A "Close" button is located at the bottom right of the window.

Name	Value
(Packet Type)	Channel Assignment
Band	800MHz
Call Index	5
Channel Number	70
Corrupt	0
Display Elapsed Time	00:00:04.503
DNA	5
Elapsed Time	4503
Fleet Map	XXXXXXXX
Frequency	860237500
Group	1
ID	4
International	0
Prior Word Invalid 1	0
Prior Word Invalid 2	0
Prior Word Invalid 3	0
Reband	1

Figure 4.3 – Packet Information window

This window provides a list of all information that GenFIT knows about a decoded data packet. When opened in *Channel* view, information is shown pertaining to the current (or last known) activity happening on the double-clicked channel.

Run-Time Indicator

The run-time indicator located in the top-right corner of GenFIT displays at all times the remaining percentage of run-time for the license currently being used. The run-time indicator begins at 100% and decreases as time passes (see Figure 4.4, indicating 97% of original run-time remains).

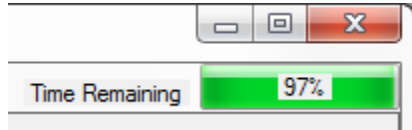


Figure 4.4 – Run-Time Indicator



When the Run-Time Indicator shows 10%, the current license has just less than 17 hours of run-time remaining. At 1%, less than 2 hours remain.