



**GenWatch3<sup>®</sup>**  
**GW\_Affiliation**  
**Software Version 2.3**  
**Module Book**

---

**GenWatch3<sup>®</sup>**

**600-2.3.0-F.1**  
**5/16/2011**



## Trademarks

The following are registered trademarks of Motorola: SmartZone, SmartNet, ASTRO®.

Any other brand or product names are trademarks or registered trademarks of their respective holders.

## The Genesis Group Trademark Information

GenWatch3® is a registered trademark of GenCore Candeo, LTD., a subsidiary of Burks Gencore Co., Inc. D.B.A. The Genesis Group and Phil Burks.

## Copyright

Copyright © 2011; Burks Gencore Co., Inc. D.B.A. The Genesis Group and Phil Burks. All rights are reserved. No part of this publication or the associated program may be reproduced, transmitted, transcribed, in whole or in part, in any form or by any means, whether it is mechanical, magnetic, optical, electronic, manual or otherwise, without the prior written consent of Burks Gencore Co., Inc. D.B.A:

The Genesis Group and Phil Burks  
601 Shelley Dr., Suite 202  
Tyler, Texas 75701.

Includes technology licensed from Motorola.

## Disclaimer

The GenWatch3 Users Manual is printed in the U.S.A. Burks Gencore Co., Inc. D.B.A. The Genesis Group and Phil Burks believe that the information included in this manual is correct; however, Burks Gencore Co., Inc. D.B.A. The Genesis Group and Phil Burks reserves the right to alter, revise and make periodic changes to the manual and its contents. Burks Gencore Co., Inc. D.B.A. The Genesis Group does not assume responsibility to notify any person of such revisions or changes. While we have taken strides to carefully examine our software and documentation and believe that it is reliable, the Genesis Group and Phil Burks assume no responsibility for the use of the manual, or GenWatch3 software, nor for any patent infringements or other rights of third parties who may use the manual or the GenWatch3 software. Burks Gencore Co., Inc. D.B.A. The Genesis Group and Phil Burks make no representations or warranties with respect to the contents or fitness for a particular purpose beyond the cost of the software paid by the end-user.

The software contains valuable trade secrets and proprietary information. Unauthorized use of the manual or software can result in civil damages and criminal prosecution. As an end user, you agree to abide by and heed these statements.

## License

Title to the media on which the program is recorded and to the documentation in support of the product is transferred to you, but title to the program, and all subsequent copies of the program, despite the form or media in or on license is not a sale of the original or any subsequent copy. You assume responsibility for the selection of the program to achieve your intended results, and for the installation, use, and results obtained from the program.

Refer to the GenWatch3 Manual Overview for your full license. All license information contained on pages 4-7 (Book 600-2.3.0-AA.1) are to be considered as contained herein.

## Support

Customer satisfaction is our number one priority at Genesis. We are here to provide you with the best software possible, and we want to know when you have any questions, concerns or problems with GenWatch3 so that we can make a better product for everyone.

Refer to the *Troubleshooting & Support* section of the GenWatch3 Manual Shell (Book 600-2.3.0-AA.1) for complete support and contact information.

## Document History

Revision	Description	Author
2.0.2	Initial Release	JAW
2.0.3	Revisions before Release	JPS
2.0.4	Added revisions for module-based centralized affiliation information. Added description for adding and removing multigroups and talkgroups.	JAW
2.0.4	Updated Figures 1.1 and 1.2	KIH
2.0.4	Added Appendix showing packet types processed	JAW
2.0.5	Added Module Options description	JAW
2.0.5	Revisions before Release	TDW
2.0.6	Updated screenshots with F1 help image	REB
2.0.6	Updated screenshots	CLB
2.0.6.6	Changes before release	WRK
2.0.6.8	Added description of Group Stats	JAW
2.0.6.11	Updated resource selector screenshots	KIH
2.2	Revision before release	CWF
2.3	Revision before release	CWF

# Table of Contents

<i>Trademarks</i> .....	3
<i>The Genesis Group Trademark Information</i> .....	3
<i>Copyright</i> .....	3
<i>Disclaimer</i> .....	3
<i>License</i> .....	3
<i>Support</i> .....	3
DOCUMENT HISTORY .....	4
<b>TABLE OF CONTENTS</b> .....	<b>5</b>
<b>ABOUT THIS MANUAL</b> .....	<b>7</b>
GOALS .....	7
WHO SHOULD READ THIS MANUAL? .....	7
HOW THIS MANUAL IS ORGANIZED .....	7
<b>CHAPTER 1 OVERVIEW</b> .....	<b>9</b>
WHAT IS GW_AFFILIATION?.....	10
<i>Terms</i> .....	10
<i>Function</i> .....	11
<i>Event Delivery and User Validation</i> .....	12
USING THE GROUPS TREE.....	13
<i>Terms</i> .....	13
<i>Function</i> .....	13
System.....	13
Zone .....	13
Site .....	13
Group (Talkgroup/Multigroup) .....	13
<i>Adding Resources</i> .....	14
Zones.....	14
Sites.....	15
Multigroups.....	16
Talkgroups .....	16
<i>Removing Resources</i> .....	17
Zone .....	17
Site .....	17
Multigroup .....	17
Talkgroup.....	18
<i>Resource Windows</i> .....	19
USING RESOURCE WINDOWS.....	20
<i>[Describe Late Entry and Active Call features here]</i> .....	21
<i>Customizing Resource Windows</i> .....	21
List Options.....	21
USING STATISTICS WINDOWS.....	25
<i>Viewing Packet Details</i> .....	27
<i>Window Options Menu</i> .....	27
<i>Group Window Options Dialog</i> .....	28
<i>Module Options Dialog</i> .....	29
<b>CHAPTER 2 ADVANCED FEATURES</b> .....	<b>31</b>
SEARCHING FOR AFFILIATED UNIT IDS .....	32
<i>Viewing Unit History</i> .....	33
Printing the Unit History Activity List.....	34
<b>APPENDIX A</b> .....	<b>35</b>
© 2011 The Genesis Group .....	5
All Rights Reserved .....	
Printed in the U.S.A. .....	

RADIO PRESENCE ACTIVITY .....	35
RADIO ABSENCE ACTIVITY .....	35

### Goals

This manual describes the function and role of the GW\_Affiliation module in the GenWatch3 solution and provides instructions on using the GW\_Affiliation graphical user interface (GUI).

### Who Should Read This Manual?



This manual is written with an expected audience of novice to mid-level trunked radio system users and novice to mid-level PC users.

### How This Manual Is Organized

This manual is organized as follows:

- **Overview:** Describes the GW\_Affiliation module, the GW\_Affiliation GUI and the organization of the affiliation information within the GW\_Affiliation GUI.
- **Advanced Features:** Describes how to search for and view the history of affiliated radio IDs.

This manual contains the following images, used to indicate that a segment of text requires special attention:

-  **Additional Information:** Additional information is used to indicate shortcuts or tips.
-  **Warning:** Warnings are used to indicate possible problem areas, such as a risk of data loss or incorrect/unexpected functionality.









This chapter describes the GW\_Affiliation module, the GW\_Affiliation GUI and the organization of the affiliation information within the GW\_Affiliation GUI.

This chapter contains the following sections:

- **What is GW\_Affiliation?:** Defines the function and role of the GW\_Affiliation module in the GenWatch3 solution.
- **Using the Groups Tree:** Describes how to use the GW\_Affiliation **Groups** tree.
- **Using Group Windows:** Describes how to use the GW\_Affiliation group windows.

## What is GW\_Affiliation?

### Terms

-  **Affiliation:** When a radio reports affiliated group information to the system. This occurs when a radio is powered on, changes groups, becomes uninhibited, etc. In addition to normal affiliation activity, GW\_Affiliation processes any group-based activity originated by the radio as an indication of presence. See *Appendix A – Radio Presence Activity* for a list of packet types.
-  **Deaffiliation:** Issued by a radio when it is powered off.
-  **Resource:** This term is used to describe systems, zones, sites, multigroups and talkgroups. (i.e., trunking system resources.)
-  **Connection Activity:** Affiliations, associations, registrations and radio-originated activity such as PTT. This activity indicates that the radio is connected.
-  **Disconnection Activity:** Deaffiliations, disassociations and deregistrations. This activity indicates that the radio is disconnected.
-  **Late Entry:** When a unit affiliates to a group during an ongoing call or PTT.

## Function

The GW\_Affiliation GUI shows the real-time connection state of a radio. You may view *connection activity* at the system level or add resources (such as zones, sites, or groups) and view affiliation activity at the resource level.

When a radio performs *connection activity*, the GW\_Affiliation module adds the radio to a list of connected radios. This list entry contains the radio's current system, zone, site, group and last activity details. When the radio issues additional activity, the GW\_Affiliation module updates the radio's current system, zone, site, talkgroup and last activity.

If the GW\_Affiliation GUI is open when a radio issues *connection activity*, the GW\_Affiliation module passes this activity on to the GW\_Affiliation GUI. The GW\_Affiliation GUI adds the originating radio to all resource windows involved in the activity.

When a radio issues a *disconnection activity*, the GW\_Affiliation module removes the radio from the list of connected radios.

If the GW\_Affiliation screen is open when a radio issues *disconnection activity* or a radio's affiliation expires, the GW\_Affiliation module passes this notification on to the GW\_Affiliation GUI. The GW\_Affiliation GUI removes the originating radio from all resource windows.

When the GenWatch3 service is started, GW\_Affiliation loads the last known affiliation information for each radio in the alias database. GW\_Alias will only keep affiliation information current if the System's **Dynamically Add Radio IDs** option is checked in the GW\_Alias GUI.


Each time a user opens the GW\_Affiliation GUI, it queries the GW\_Affiliation module for a list of currently affiliated radios. The GW\_Affiliation GUI uses this list to populate the resource windows. This means that you can keep the GW\_Affiliation GUI closed and its module will continue to gather affiliation information.

GW\_Affiliation also provides radio search options as well as easy access to radio history archived by the GW\_Archiver module.

## Event Delivery and User Validation

Before the GW\_Affiliation module delivers affiliation activity to a GW\_Affiliation GUI, it verifies that the GenWatch3 user's attachment list contains the default group of the originating radio ID. To view or change a user's attachment list, see the **Group Filter** setting in GW\_Security. To view or change a radio's *Default Group*, see the **Radio Id Options** in the GW\_Alias GUI.

If the user's role contains the *ViewAllGroups* privilege under the GW\_Affiliation module, the event is delivered regardless of the user's attachment list. To view or change a user's role privileges, see the **Role Privileges** section in GW\_Security.

 GenWatch3 reports activity as it is received. Radio models report affiliation and deaffiliation based on their software programming and their hardware design. In our testing we have seen some radio models refuse to report deaffiliation, regardless of programming.

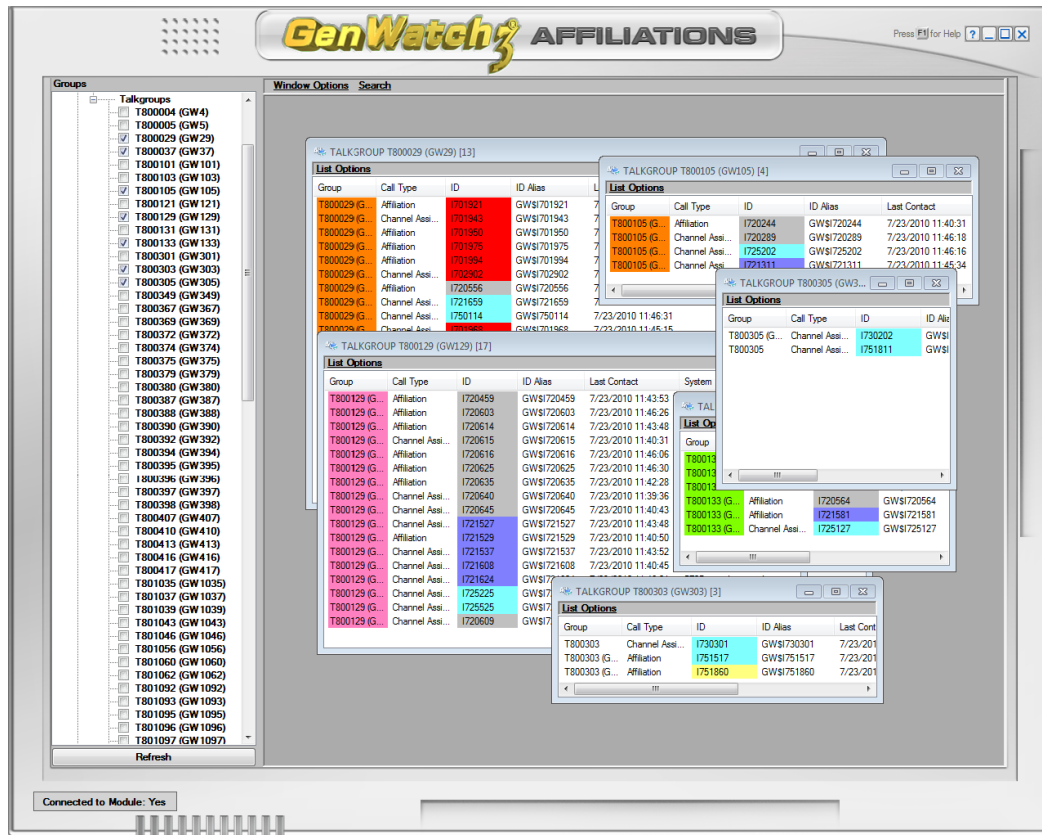


Figure 1.1 – GW\_Affiliation GUI

## Using the Groups Tree

### Terms



**Node:** An entry or item in a tree.



**Attachment List:** The groups assigned to a GenWatch3 user in the GW\_Security screen.

### Function

The **Groups** tree contains a node for each known resource added to the GW\_Affiliation **Groups** tree by a user. These resources are organized under systems. Each system also contains a node for zones, multigroups and talkgroups.

Activity can be viewed at multiple levels.

#### System

System resource windows allow you to view a system's affiliation activity with one convenient window. Check a **System** node to open a system resource window and view affiliation activity for all radios on the system.

#### Zone

Zone resource windows allow you to view a zone's affiliation activity with one convenient window. Check a **Zone** node to open a zone resource window and view affiliation activity for all radios on the zone.

#### Site

Site resource windows allow you to view a site's affiliation activity with one convenient window. Check a **Site** node to open a site resource window and view affiliation activity for all radios on the site.

#### Group (Talkgroup/Multigroup)

Group resource windows allow you to view a group's affiliation activity with one convenient window. Check a **Talkgroup** or **Multigroup** node to open a group resource window and view affiliation activity for all radios on the group.

## Adding Resources

The System window shows affiliation activity at the system level. If you wish to view affiliation activity for a specific resource, you must add the resource to the **Groups Tree**.



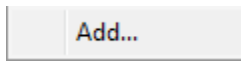
Things to remember about searching for resources:

- The search results will not contain resources that are already in your **Groups Tree**.
- The search results will only contain groups/multigroups that are valid for your attachment list.

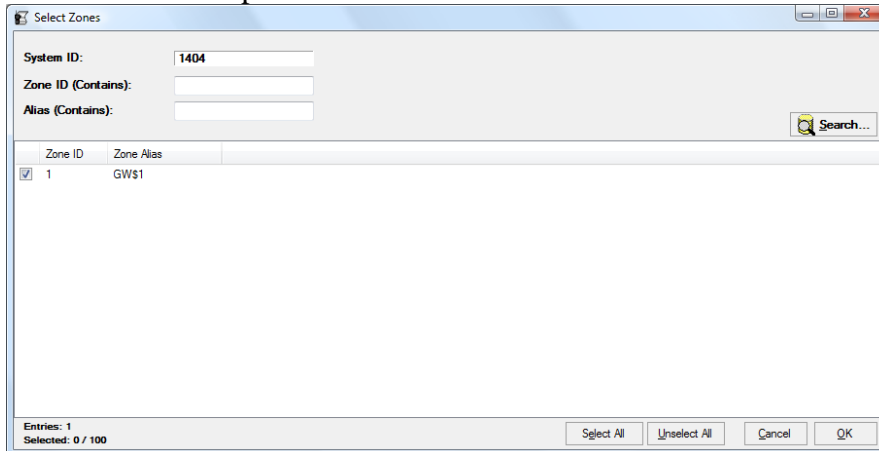
## Zones

To add one or more zones, take the following steps:

1. Right-click on the **Zones** node under the system you wish to add zones under: This will show the Zone options menu.



2. Click the **Add...** option: This will load the *Select Zones* window.

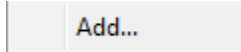


3. Enter search criteria and click the **Search** button: This will show each zone that meets your search criteria in the zone list.
4. Check each zone that you wish to add to your **Groups Tree** by double-clicking the zone in the list or checking the checkbox in the **Zone ID** column.
5. When finished selecting zones, Click the **OK** button: This will close the *Select Zones* window and add the selected zones under the **Zones** node.

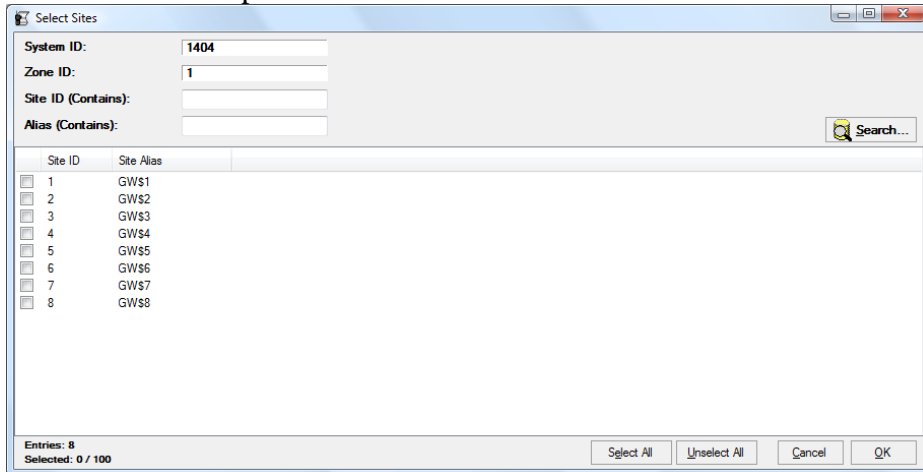
## Sites

To add one or more sites, take the following steps:

1. Right-click on the **Sites** node under the zone you wish to add sites under:  
This will show the Sites options menu.



2. Click the **Add...** option: This will load the *Select Sites* window.

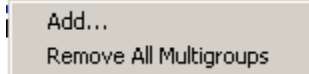


3. Enter search criteria and click the **Search** button: This will show each site that meets your search criteria in the site list.
4. Check each site that you wish to add to your **Groups** Tree by double-clicking the site in the list or checking the checkbox in the **Site ID** column.
5. When finished selecting sites, Click the **OK** button: This will close the *Select Sites* window and add the selected sites under the **Sites** node.

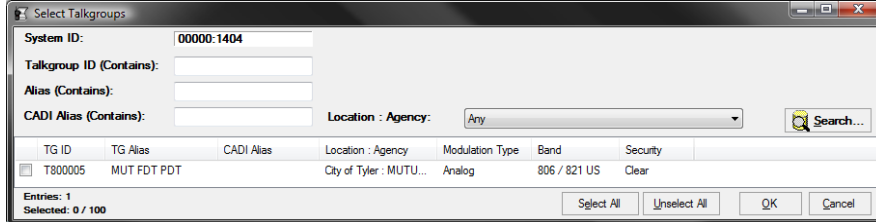
## Multigroups

To add one or more multigroups, take the following steps:

1. Right-click on the **Multigroups** node under the system you wish to add multigroups under: This will show the Multigroups options menu.



2. Click the **Add...** option: This will load the *Select Talkgroups* window.

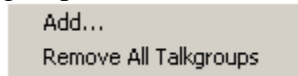


3. Enter search criteria and click the **Search** button: This will show each multigroup that meets your search criteria in the group list.
4. Check each multigroup that you wish to add to your **Groups** Tree by double-clicking the multigroup in the list or checking the checkbox in the **TG ID** column.
5. When finished selecting multigroups, Click the **OK** button: This will close the *Select Talkgroups* window and add the selected multigroups under the **Multigroups** node.

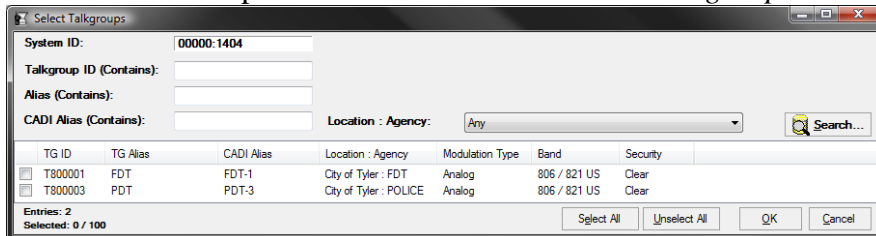
## Talkgroups

To add one or more groups, take the following steps:

1. Right-click on the **Talkgroups** node under the system you wish to add groups under: This will show the Talkgroups options menu.



2. Click the **Add...** option: This will load the *Select Talkgroups* window.



3. Enter search criteria and click the **Search** button: This will show each group that meets your search criteria in the group list.
4. Check each group that you wish to add to your **Groups** Tree by double-clicking the group in the list or checking the checkbox in the **TG ID** column.
5. When finished selecting groups, Click the **OK** button: This will close the *Select Talkgroups* window and add the selected groups under the **Talkgroups** node.

## Removing Resources

### Zone

To remove a single zone from a **Zones** node, take the following steps:

1. Right-click on the zone that you wish to remove: This will show the Zone Options menu.

A rectangular button with the text "Remove" centered inside.

2. Click the **Remove** option: This will show a confirmation dialog.
3. Click **Yes**: This will remove the zone and all sites under the zone from the **Groups** Tree.

### Site

To remove a single site from a **Sites** node, take the following steps:

1. Right-click on the site that you wish to remove: This will show the Site Options menu.

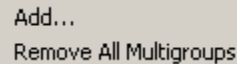
A rectangular button with the text "Remove" centered inside.

2. Click the **Remove** option: This will show a confirmation dialog.
3. Click **Yes**: This will remove the site from the **Groups** Tree.

### Multigroup

To remove all multigroups under a system, take the following steps:

1. Right-click on the **Multigroups** node: This will show the Multigroups Options menu.

A rectangular button with the text "Remove All Multigroups" centered inside.

2. Click the **Remove All Multigroups** option: This will show a confirmation dialog.
3. Click **Yes**: This will remove all multigroups from the **Multigroups** node.

To remove a single multigroup from the **Multigroups** node, take the following steps:

1. Right-click on the multigroup that you wish to remove: This will show the Multigroup Options menu.

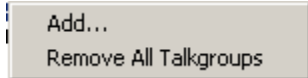
A rectangular button with the text "Remove" centered inside.

2. Click the **Remove** option: This will show a confirmation dialog.
3. Click **Yes**: This will remove the multigroup from the **Groups** Tree.

## Talkgroup

To remove all groups under a system, take the following steps:

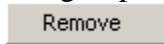
1. Right-click on the **Talkgroups** node: This will show the Talkgroups Options menu.



2. Click the **Remove All Talkgroups** option: This will show a confirmation dialog.
3. Click **Yes**: This will remove all groups from the **Talkgroups** node.

To remove a single group from the **Talkgroups** node, take the following steps:

1. Right-click on the group that you wish to remove: This will show the Talkgroup Options menu.



2. Click the **Remove** option: This will show a confirmation dialog.
3. Click **Yes**: This will remove the talkgroup from the **Groups** Tree.



Removing a resource from the **Groups** Tree does not delete this resource from your alias database. It only affects the GW\_Affiliation **Groups** Tree, and only for your user. The next time you load the GW\_Affiliation screen, it will load the resources that were in your **Groups** Tree at the time it was last closed.

## Resource Windows

Notice that each node in the **Groups** Tree contains a check box. For systems, multigroups, zones, sites and groups, the check box indicates if the window for this resource is loaded. Resource windows reside in the space to the right of the **Groups** Tree. You may have up to 10 resource windows open at one time. Having all windows open is not necessary as the affiliation activity is gathered in the GW\_Affiliation module, even if the GW\_Affiliation screen is not open.

Checking the check box of a resource node will show the resource's window. Unchecking the check box of a resource node will hide the resource's window.

Double-clicking a checked Site node in the **Groups** tree will minimize or restore the resource's window. In this case, minimized windows are restored and restored windows are minimized.

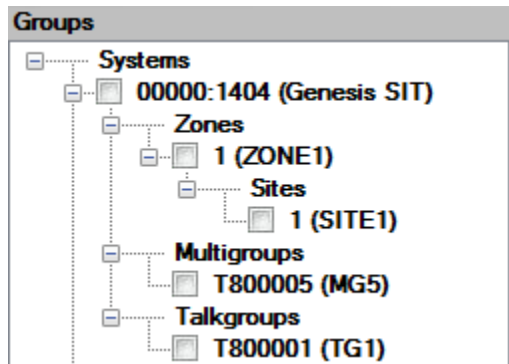
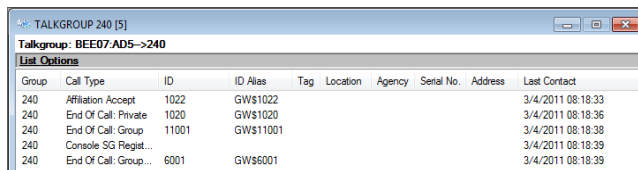


Figure 1.2 – GW\_Affiliation Groups Tree

## Using Resource Windows

Each resource in the **Group** Tree has its own window. These windows show the affiliation activity that has occurred in the resource since the GW\_Affiliation module was started. Each window contains the following information:

- **Type:** The resource type is shown in the title bar of the **Resource** window. Types include:
  - System
  - Talkgroup
  - Multigroup
  - Zone
- **ID:** The zone, site, group, or system ID is shown in the white bar below the title bar along with the Type.
- **Activity:** Group activity. The group activity list can contain any of the following columns:
  - **Group:** The talkgroup/multigroup ID (and alias) of the group included in the activity.
  - **Call Type:** This is the last activity type received for this radio ID. This can be any group-based activity.
  - **ID:** Radio ID included in the activity.
  - **ID Alias:** Alias of the radio ID.
  - **Tag:** Tag assigned to the originating radio ID.
  - **Location:** Location of the radio ID.
  - **Agency:** Agency of the radio ID.
  - **Serial Number:** Serial number of the radio ID.
  - **Address:** Address of the radio ID.
  - **Last Contact:** The last date and time GW\_Affiliation received activity for this radio ID.
  - **System:** The system ID the activity was received on.
  - **Zone:** The zone ID the activity was received on.
  - **Site:** The site ID the activity was received on.



Group	Call Type	ID	ID Alias	Tag	Location	Agency	Serial No.	Address	Last Contact
240	Affiliation Accept	1022	GW\$1022						3/4/2011 08:18:33
240	End Of Call: Private	1020	GW\$1020						3/4/2011 08:18:36
240	End Of Call: Group	11001	GW\$11001						3/4/2011 08:18:38
240	Console SG Regist...								3/4/2011 08:18:39
240	End Of Call: Group...	6001	GW\$6001						3/4/2011 08:18:39

**Figure 1.3** – GW\_Affiliation Group Window



GW\_Affiliation will allow a maximum of 10 open resource Windows and 10 Statistic Windows. All resources are constantly monitored by the GW\_Affiliation module, but only up to 10 of each window can be opened for viewing within the GW\_Affiliation GUI.

[Describe Late Entry and Active Call features here]

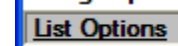
## Customizing Resource Windows

Resource windows allow you to customize their appearance. You can modify the following properties of each resource window:

- **Window Size:** To resize a window:
  1. Move your mouse pointer over the edge of the window.
  2. When the mouse pointer changes to one of the resize pointers, hold down the left mouse button to resize the window.
- **Column Size:** To change a column's size:
  1. In the column header section of the *Activity List*, move your mouse pointer to the right side of the column to resize.
  2. When the mouse pointer changes to the resize pointers, hold down the left mouse button to resize the window.

### List Options

This menu provides options to customize group windows and view information related to the resource window. The figure below shows the List Options menu.



**Figure 1.4** – List Options

The list below describes the options present in List Options.

- **Font:** To change the font:
  1. Click the **List Options** menu toward the top of the window. (see Figure 1.4) This will result in a menu of options, including **Font...**
  2. Click the **Font...** option: This will result in a font dialog box. (see Figure 1.5)
  3. Choose the desired font options.
  4. Click the **OK** button.
- **Text Color:** To change the text color:
  1. Click the **List Options** menu toward the top of the window. (see Figure 1.4) This will result in a menu of options, including **Text Color...**
  2. Click the **Text Color...** option: This will result in a color dialog box. (see Figure 1.6)
  3. Choose the desired color.
  4. Click the **OK** button.
- **Background color:** To change the background color of the *Activity List*:
  1. Click on the **List Options** menu toward the top of the window. (see Figure 1.4) This will result in a menu of options, including **Background Color.**
  2. Click the **Background Color...** option: This will result in a color dialog box. (see Figure 1.6)
  3. Click the desired color.
  4. Click the **OK** button.

- **Show Group Type:**
  1. Click on the **List Options** menu toward the top of the window. (see Figure 1.4) This will result in a menu of options, including **Show Group Type**.
  2. Click the **Show Group Type** option: This will show/hide the Resource Type header at the top of the window. This header includes <WACN:System ID> -> <Zone>, <WACN:System ID> -> <Group> etc.
- **Print:**
  1. Select the activity in the *activity list* that you wish to print. Select a range by clicking on the first activity and holding **Shift** while clicking on the last activity in the desired range. If you wish to print all of the activity in the activity list, skip this step.
  2. Click on the **List Options** menu toward the top of the Group GUI. This will result in a menu of options, including **Print...**
  3. Click on the **Print ...** option: This will show the printer options screen specific to your default printer.
  4. Select the options for your printer. It is usually best to choose to print in landscape mode (not portrait).
  5. Click **OK** once you are satisfied with your printer options: This will result in a dialog, asking if you want to print the selected items or all items.
- **Get Statistics...:** Opens a *Statistics* dialog with two panels.
  - **Resource Stats panel:** Shows a total of distinct resources related to the window's resource. (see figure 1.7)
    - System windows show zones, sites, groups and radios.
    - Zone windows show sites, groups and radios.
    - Site windows show groups and radios.
    - Group windows show zones, sites and radios.

Note that Zone, Site and Group Ids of 0 or blank are counted towards the distinct total.
  - **Group Stats panel:** Shows a list of all groups related to the window's resource and the number of radios affiliated to each group. (see figure 1.7)
- **Expire Radio...:** Manually expires a radio's affiliation entry in the GW\_Affiliation module. The radio is removed from all resource windows. This action only affects GW\_Affiliation.

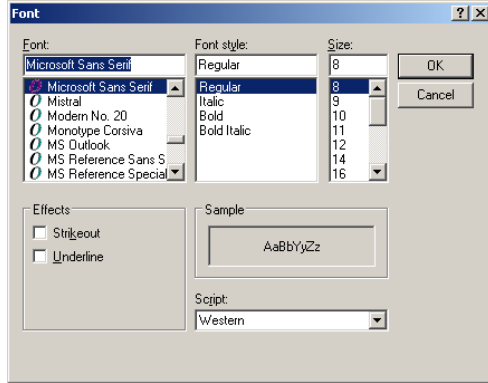


The number of Sites in the Statistics window is determined by the number of unique Site ID's per Zone.



The GW\_Affiliation GUI reflects the changes that you make to resources in the GW\_Alias GUI. If you change the alias of a resource or delete a resource, the **Groups** tree will reflect this change. Here are a few exceptions that require special actions to see the changes in the GW\_Affiliation **Groups** tree:

- If a new system is added or deleted in GW\_Alias, you must click the **Refresh** button to have the **Groups** tree reflect the change.
- If groups or multigroups are imported in the GW\_Alias GUI, you must click the **Refresh** button to have the **Groups** tree reflect the results of the import.



**Figure 1.5** – Font Dialog



**Figure 1.6** – Color Dialog

## Using Statistics Windows

Each resource in the **Group** tree has its own window. Each of these windows have the **Get Statistics...** option under the **List Options** menu. The Statistics windows will display real time information that pertains to the group window it was selected from. Each of these windows will contain resource information and Group Statistics (talkgroup and multigroup statistics windows will not have **Group Statistics**). Each window contains some or all of the following information:

- **Type:** The resource type is shown in the title bar of the *Statistics* window. Types include:
  - System
  - Zone
  - Site
  - Multigroup
  - Talkgroup
- **ID:** The Zone, site, group, or system ID is shown in the white bar below the title bar along with the Type.
- **Resource Statistics:** Resource usage. The Resource Statistics list will contain the following columns:
  - **Resource:** The type of resource the group window is using. These can contain Zones, Sites, Radios and/or Groups depending on the Statistics window type (System, Site, etc...).
  - **Count:** This is the distinct count of **Resources** of the group window.
  - **Help:** Text that gives context to the **Resource** and **Count** column.
- **Group Statistics:** The Group Statistics list will contain the following columns (not all statistics windows have Group Statistics):
  - **Group:** The Group ID of groups with activity. There are two default groups that will always display in the list even if there are no Radios present on them:
    - Group '0' (zero) is for Radios that are registered on a system and were registered to a group then deaffiliated from the group.
    - Group '<none>' is for radios that have just registered to the system for this first time (or since a deregistration) and have not yet affiliated to a group.
  - **Affiliated Unit Count:** The number of radios currently on a group.
  - **Help:** Text that gives context to the group. Currently only used for the two default groups.



The **Zones** row in the *Resource Statistics* window is volatile; Console SG Registration activity will increment the Zones count. However if the service is stopped and Affiliation reloaded the Console SG Registration will not appear in Affiliation and the Zones count will reflect it is no longer present.



If an affiliation request is denied the Unit will appear in Group '0' of the statistics window.

The screenshot shows a window titled "STATISTICS SYSTEM BEE07:AD5" with a sub-header "WACN: System: BEE07:AD5". It contains two tables. The first table lists system resources and their counts. The second table, titled "Group Statistics", lists various groups and their affiliated radio counts.

Resource	Count	Help
Zones	3	Distinct number of Zones
Sites	3	Distinct number of Sites
Radios	7	Distinct number of Radios
Groups	4	Distinct number of groups, excluding Groups 0 and <None>

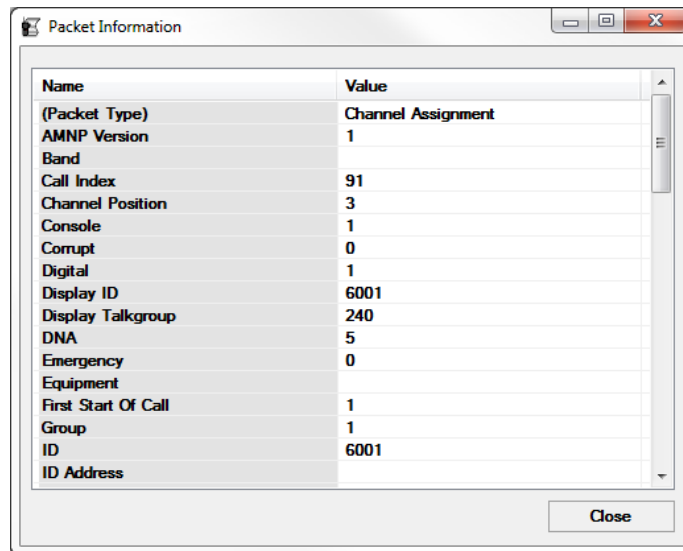
Group	Affiliated Radio Count	Help
240	4	
9002	1	
9001	1	
65535	1	
0	0	Radios that are registered and are no longer affiliated with a group
<None>	0	Radios that have registered but not yet affiliated

**Figure 1.7** – System Statistics Window

## Viewing Packet Details

Activity in the resource windows contains much more information than is actually shown. To view the details of an activity:

1. Double-click on the activity in the group window: This will load the *Packet Information* window.
2. Scroll through the data in the *Packet Information* window.
3. When finished, click the **Close** button.



**Figure 1.8** – Packet Information window

## Window Options Menu

The 'Windows Options' menu contains the following options:

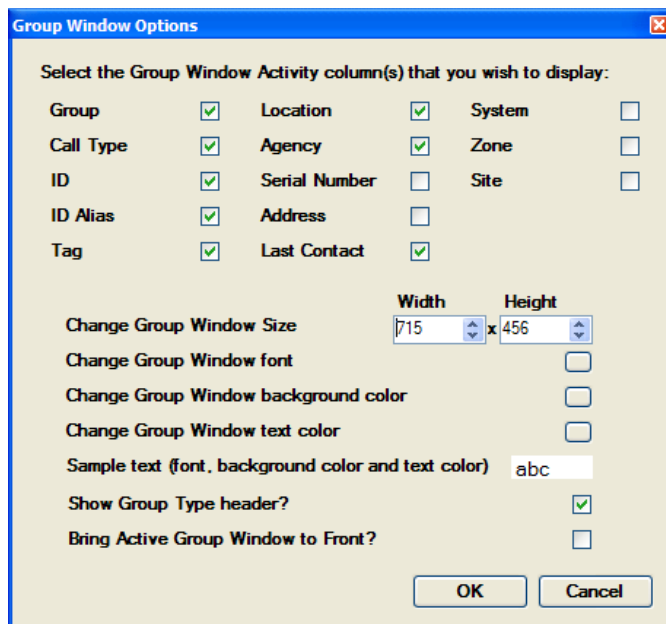
- **Cascade:** Cascade arranges all windows that are not minimized.
- **Tile Horizontal:** Horizontally tiles all windows that are not minimized.
- **Tile Vertical:** Vertically tiles all windows that are not minimized.
- **Minimize All:** Minimizes all windows.
- **Restore All:** Restores all minimized windows.
- **Group Window Options...:** Loads the *Group Window Options* dialog.
- **Module Options...:** Loads the *Module Options* dialog.
- **Apply Skin / Remove Skin:** Add/remove the skinned look to GW\_Affiliation.

## Group Window Options Dialog

The *Group Window Options* dialog allows you to customize multiple *Resource* windows at once as well as define the defaults for any *Resource* windows you may open later. The options selected in this dialog will affect all open *Resource* windows. If you had a *Resource* window open and closed it (unchecked it) before making changes in the *Resource Window Options* dialog, the closed *Resource* window will retain its previous settings and be unchanged by the *Group Window Options* changes.

The *Group Window Options* dialog allows you to select the following:

- **Group Window Columns:** Uncheck the column(s) that you do not wish to display in the *Resource* windows.
- **Group Window Size:** Select the width and height that you wish to set for each *Resource* window.
- **Group Window Font:** Select the font that you wish to set for the *Resource* window's activity list.
- **Group Window Background Color:** Select the color that you wish to set for the *Resource* window's activity list.
- **Group Window Text Color:** Select the color that you wish to set for the *Resource* window's activity list text.
- **Show Group Type header:** Shows the group ID.
- **Bring Active Group Window to Front:** When a *Resource* window receives activity, it will be restored (if minimized) and brought to the front of all *Resource* windows.



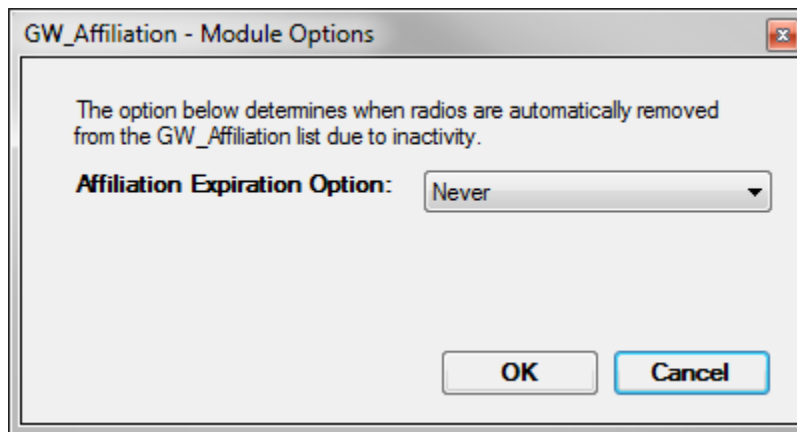
**Figure 1.9** – Group Window Options Dialog

## Module Options Dialog

The *Module Options* dialog allows you to customize the module-level options for the GW\_Affiliation module. These options affect all users. Module options include:

- **Affiliation Expiration Option:** This option determines when to automatically deaffiliate a radio due to inactivity. If a radio goes longer than this duration without activity, it will be removed from the affiliation list and therefore removed from any group window in the GW\_Affiliation screen. Once a radio is deaffiliated via affiliation expiration, it is considered deaffiliated until it issues activity. Affiliation expiration is limited to the GW\_Affiliation module. It will not show on the GW\_Activity screen or any other module/screen in GenWatch3. Options include:
  - \*Never
  - One Hour
  - Four Hours
  - Twelve Hours
  - One Day
  - One Week
  - One Month
  - Three Months
  - Six Months
  - One Year

\* - If Never is selected, then radios are not automatically deaffiliated due to inactivity.



**Figure 1.10** – Module Options Dialog



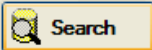
This chapter describes how to search for and view the history of affiliated radio IDs.

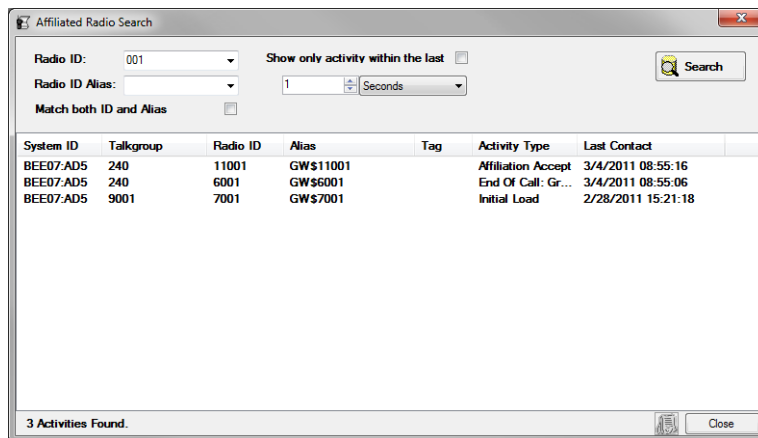
This chapter contains the following sections:

- **Searching for Affiliated Radio IDs:** Describes how to search for affiliated radio IDs.
- **Viewing Radio ID History:** Describes how to view an affiliated radio ID's history.

## Searching for Affiliated Unit IDs

The GW\_Affiliation search option allows you to quickly determine the current group of a specific radio ID. The **Search** menu contains the following item:

- **For Affiliated Unit...:** Shows the *Affiliated Radio Search* window to allow you to search for an affiliated radio ID across all groups and multigroups within all systems. To search for an affiliated unit:
  1. Type a radio ID into the **Radio ID** number box or a radio ID alias in the **Radio ID alias** box, or you may specify both a radio ID and a radio ID alias to search for. If the **Radio ID** is left blank, it is not considered. If the **Radio ID alias** is left blank, it is not considered. Both radio IDs and alias are partial searches. This means that if you type 10 for the radio ID, the search will return all radio IDs beginning with 10, such as 10, 100, 108, etc (see Figure 2.1).
  2. To return only activities matching both the **Radio ID** and the **Radio ID alias**, check the **Match Both ID and Alias** box.
  3. If you wish to only search for units who received activity within a given amount of time, click the **Show only activity within the last** checkbox. Choose a value and duration.
  4. Press **Enter** or click the  button: The search grid will send this request to the GW\_Affiliation module and will show a row for each affiliated radio that satisfied the search criteria. If no affiliated radios were found, a dialog will appear asking if you wish to search again or exit the search screen.



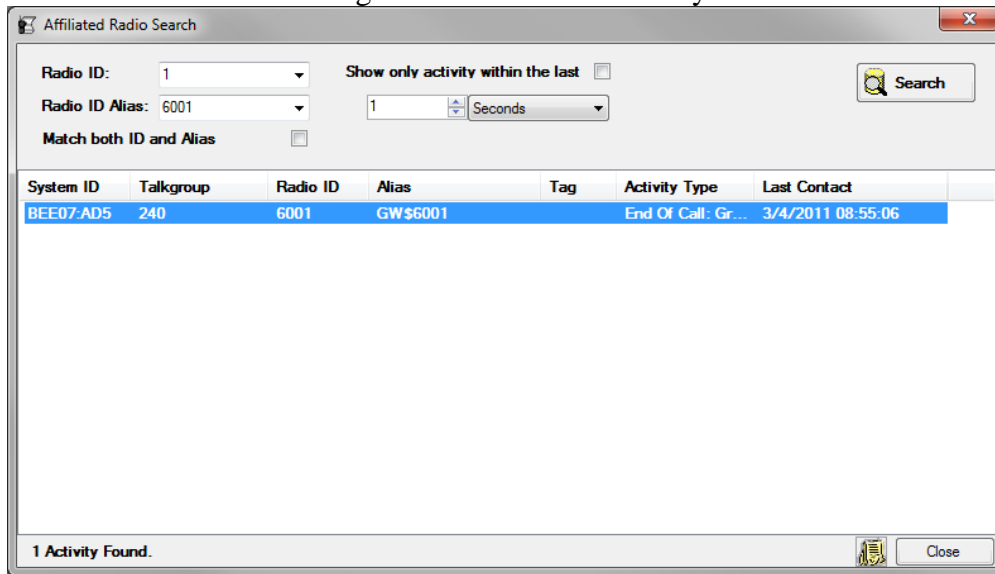
**Figure 2.1** – Affiliated Radio Search window






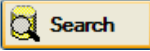
The Radio ID and Radio ID alias drop-down lists contain the 10 most recent search values issued by the current user.


## Viewing Unit History

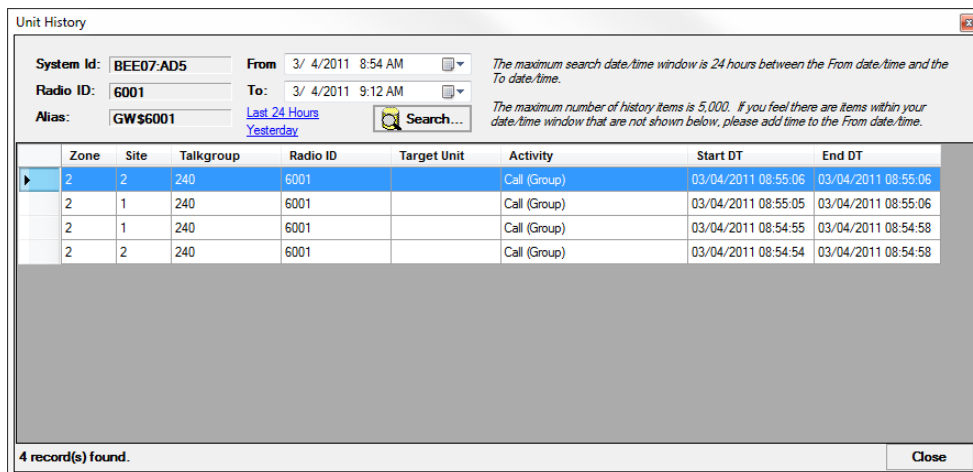
The *Affiliated Radio Search* allows you to view radio activity history on the units shown in the search results grid. To view radio history:



1. Perform a search that results in activity in the search results grid.
2. Select the radio that you wish to display history for, by clicking on the radio in the search results grid: This will enable the  button.
3. Click the  button: This will load the *GW\_Affiliation Unit History* screen, showing activity for the selected radio over the last 24 hours.

 You may change the **From** and **To** time and click the  button to view activity for this radio for a different time frame.

 GenWatch3 only stores radio history if the *GW\_Archiver* module is set to archive activity from your system.



**Figure 2.2** – *GW\_Affiliation Unit History* Window

### **Printing the Unit History Activity List**

You may wish to print the contents of the *Unit History* activity list. To print this list:

1. Select the activity in the activity list that you wish to print. Select a range by clicking on the first activity and holding **Shift** while clicking on the last activity in the desired range. If you wish to print all of the activity in the activity list, skip this step.
2. Right-click on the activity list: This will show the activity list options.
3. Click on the **Print ...** option: This will show the printer options screen specific to your default printer.
4. Select the options for your printer. It is usually best to choose to print in landscape mode (not portrait).
5. Click **OK** once you are satisfied with your printer options: This will result in a dialog, asking if you want to print the selected items or all items.
6. Make your selection from the dialog. Clicking **Yes** or **No** will print. **Cancel** will cancel this print request.

## Radio Presence Activity

This section shows each packet type (activity) that is considered “radio presence” by the logic in GW\_Affiliation. These packets will result in GW\_Affiliation adding a radio to the resources referenced in the activity. These “radio presence” packet types may differ from other GenWatch3 modules. GW\_Affiliation uses the Packet Type, Extended Function and Affiliation Function fields to determine packet type.

Packet Type
Affiliation
Association
Busy
ChangeMe Request
Channel Assignment
Dynamic Regrouping ACK
Emergency Alarm
Message
Registration
Status
RM/RT Command ACK
Call Update

## Radio Absence Activity

This section shows each packet type (activity) that is considered “radio absence” by the logic in GW\_Affiliation. These packets will result in GW\_Affiliation removing a radio from the resources referenced in the activity. These “radio absence” packet types may differ from other GenWatch3 modules. GW\_Affiliation uses the Packet Type, Extended Function and Affiliation Function fields to determine packet type.

Packet Type
Deaffiliation
Deregistration
Disassociation
Selective Inhibit ACK
Radio Detach
Registration Refused/Denied
Request Unit Registration