



GenWatch3[®]
GW_Activity
Software Version 2.3
Module Book

GenWatch3[®]

600-2.3.0-E.1
4/8/2011

Trademarks

The following are registered trademarks of Motorola: SmartZone, SmartNet, ASTRO®.

Any other brand or product names are trademarks or registered trademarks of their respective holders.

The Genesis Group Trademark Information

GenWatch3® is a registered trademark of GenCore Candeo, LTD., a subsidiary of Burks Gencore Co., Inc. D.B.A. The Genesis Group and Phil Burks.

Copyright

Copyright © 2011; Burks Gencore Co., Inc. D.B.A. The Genesis Group and Phil Burks. All rights are reserved. No part of this publication or the associated program may be reproduced, transmitted, transcribed, in whole or in part, in any form or by any means, whether it is mechanical, magnetic, optical, electronic, manual or otherwise, without the prior written consent of Burks Gencore Co., Inc. D.B.A:

The Genesis Group and Phil Burks
601 Shelley Dr., Suite 202
Tyler, Texas 75701.

Includes technology licensed from Motorola.

Disclaimer

The GenWatch3 Users Manual is printed in the U.S.A. Burks Gencore Co., Inc. D.B.A. The Genesis Group and Phil Burks believe that the information included in this manual is correct; however, Burks Gencore Co., Inc. D.B.A. The Genesis Group and Phil Burks reserves the right to alter, revise and make periodic changes to the manual and its contents. Burks Gencore Co., Inc. D.B.A. The Genesis Group does not assume responsibility to notify any person of such revisions or changes. While we have taken strides to carefully examine our software and documentation and believe that it is reliable, the Genesis Group and Phil Burks assume no responsibility for the use of the manual, or GenWatch3 software, nor for any patent infringements or other rights of third parties who may use the manual or the GenWatch3 software. Burks Gencore Co., Inc. D.B.A. The Genesis Group and Phil Burks make no representations or warranties with respect to the contents or fitness for a particular purpose beyond the cost of the software paid by the end-user.

The software contains valuable trade secrets and proprietary information. Unauthorized use of the manual or software can result in civil damages and criminal prosecution. As an end user, you agree to abide by and heed these statements.

License

Title to the media on which the program is recorded and to the documentation in support of the product is transferred to you, but title to the program, and all subsequent copies of the program, despite the form or media in or on license is not a sale of the original or any subsequent copy. You assume responsibility for the selection of the program to achieve your intended results, and for the installation, use, and results obtained from the program.

Refer to the GenWatch3 Manual Overview for your full license. All license information contained on pages 4-7 (Book 600-2.3.0-AA.1) are to be considered as contained herein.

Support

Customer satisfaction is our number one priority at Genesis. We are here to provide you with the best software possible, and we want to know when you have any questions, concerns or problems with GenWatch3 so that we can make it a better product for everyone.

Refer to the *Troubleshooting & Support* section of the GenWatch3 Manual Shell (Book 600-2.3.0-AA.1) for complete support and contact information.

Document History

Revision	Description	Author
2.0.2	Initial Release	JAW
2.0.3	Revisions before Release	JPS
2.0.4	Changed to reflect new Advanced Filter options	JAW
2.0.5	Revisions before Release	TDW
2.0.6	Updated screenshots with F1 help image	REB
2.0.6	Update Activity Values details	CLB
2.0.6.6	Revisions before Release	JAW
2.2	Revision before release	CWF

Table of Contents

<i>Trademarks</i>	3
<i>The Genesis Group Trademark Information</i>	3
<i>Copyright</i>	3
<i>Disclaimer</i>	3
<i>License</i>	3
<i>Support</i>	3
DOCUMENT HISTORY	4
TABLE OF CONTENTS	5
ABOUT THIS MANUAL	7
GOALS	7
WHO SHOULD READ THIS MANUAL?	7
HOW THIS MANUAL IS ORGANIZED	7
CHAPTER 1 OVERVIEW	9
WHAT IS GW_ACTIVITY?	10
MONITORING CHANNEL ACTIVITY	10
<i>Activity Values</i>	11
<i>Maximizing the Activity List</i>	13
CUSTOMIZING CHANNEL ACTIVITY	13
<i>Changing Activity List Font and Size</i>	13
<i>Enabling/Disabling the Green Bar</i>	14
<i>Showing/Hiding Columns</i>	14
<i>Reordering Columns</i>	15
<i>Adding a Little Color to Your Life</i>	16
<i>Disabling Packet Throttling</i>	16
<i>Filtering Packet Types</i>	16
<i>Selecting All Packets</i>	17
<i>Unselecting All Packets</i>	17
<i>Suppressing Duplicate Packets</i>	17
CHAPTER 2 ADVANCED OPTIONS	19
ADVANCED FILTERS	20
<i>System Filter</i>	20
<i>Group Filter</i>	22
<i>Radio IDs Filter</i>	22
<i>Agencies Filter</i>	23
PAUSING THE ACTIVITY LIST.....	24
<i>Pause Window Options</i>	25
Opacity (available in menu only)	25
Print (available in menu and right-click).....	25
Select All... (available in right-click only)	25
ACTIVITY DETAILS	26

Goals

This document describes the role and function of the GW_Activity module and GW_Activity GUI (Graphical User Interface) within the GenWatch3 solution.

Who Should Read This Manual?



This document is written for an intended audience of novice to intermediate trunked radio system users and novice to intermediate PC users.

How This Manual Is Organized

This manual is organized as follows:

- **Overview:** Describes the basic function of the GW_Activity module and GUI.
- **Advanced Options:** Describes the function of the advanced GW_Activity options.

This manual contains the following images, used to indicate that a segment of text requires special attention:

-  **Additional Information:** Additional information is used to indicate shortcuts or tips.
-  **Warning:** Warnings are used to indicate possible problem areas, such as a risk of data loss, or incorrect/unexpected functionality.

This chapter defines the GW_Activity module and GW_Activity GUI and gives instructions on filtering and color-coding packets.

This chapter contains the following sections:

- **What is GW_Activity?:** Defines the GW_Activity module and GUI.
- **Monitoring Channel Activity:** Describes how to interpret the data in the activity list.
- **Customizing Channel Activity:** Describes how to customize the GW_Activity GUI.

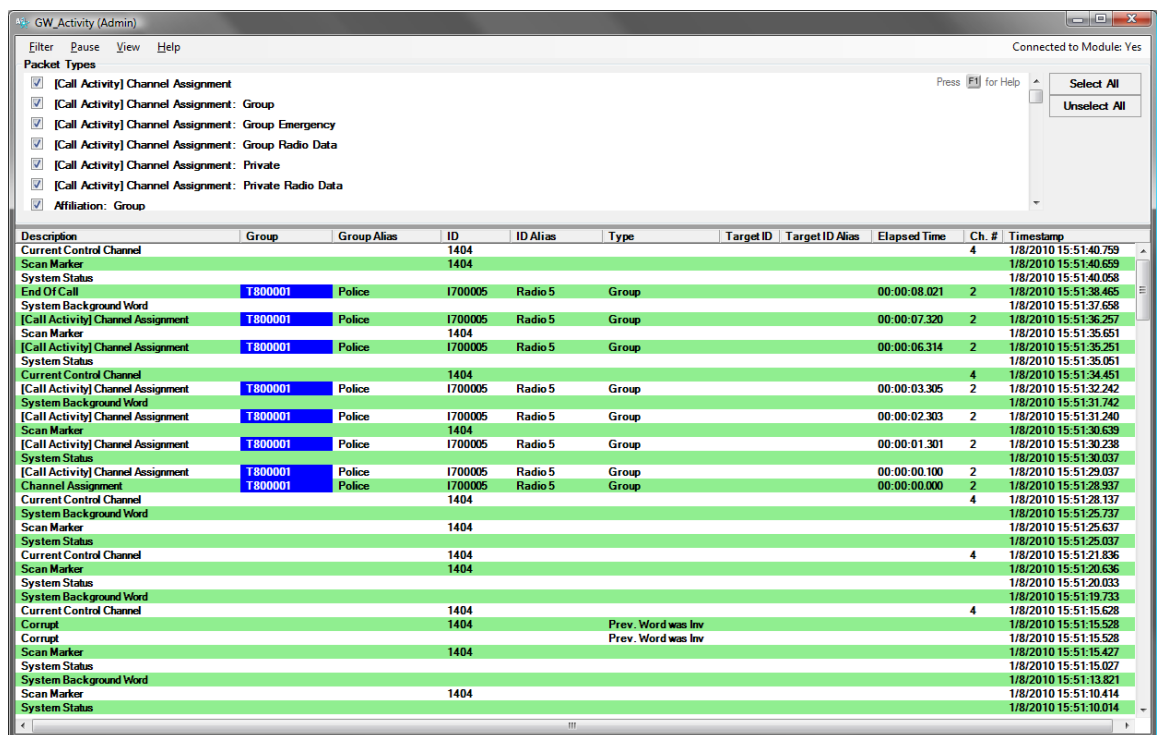


Figure 1.1 –GW_Activity View Screen

What is GW_Activity?

The GenWatch3 GW_Activity GUI shows real-time activity from each GenWatch3 input connection. These input connections can vary from single-site connections monitoring a control channel to multi-site connections receiving data from a data stream. Through this screen you can:

- Monitor channel activity.
- Filter the packet types.
- Assign colors to specific packet types.
- Customize the font and column order of the *activity list*.
- Suppress duplicate packets.
- Pause the *activity list*.
- Print the *activity list*.

Monitoring Channel Activity

The GenWatch3 GW_Activity GUI provides the *activity list*. This list allows you to view control channel or multi-site stream activity in real time. For a description of the type of information that can be received for a particular input type, refer to the module book for the input module.



Refer to the *Troubleshooting & Support* section of the GenWatch3 Manual Shell (Book 600-2.3.0-AA.1) for complete support and contact information.

Activity Values

The *activity list* contains the following columns:

- **Description:** Broad category of the activity (i.e. Affiliation, Status, Message, etc.).
- **Group:** Target group (if any) of the activity.
- **Group Alias:** Alias of the target group (if there is a group). If the multi-site stream includes a group ID alias, this alias will be used. See note on aliases below.
- **ID:** Originating radio ID (if any) of the activity.
- **ID Alias:** Alias of the originating radio ID (if there is a radio ID). If the multi-site stream includes a radio ID alias, this alias will be used. See note on aliases below.
- **Type:** Activity sub category. Further describes the type of activity.
- **Target ID:** This will contain one of the following values, if the value is provided in the packet:
 - **Target Radio ID:** For call alerts, private calls, etc.
 - **Target Supergroup:** For dynamic regrouping.
 - **Diagnostic Condition Description:** For system diagnostics
 - **Message Number:** For messages
 - **Status Number:** For statuses
 - **Reason:** For rejects, corruption, etc.
 - **Longitude:** For GPS Location info
 - **Latitude:** For GPS Location info
- **Target ID Alias:** This will contain one of the following values, if the value is provided in the packet.
 - **Target Radio ID Alias:** For call alerts, private calls, etc. If the multi-site stream includes a Target Radio ID Alias, this alias will be used. See note on aliases below.
 - **Target Supergroup Alias:** For dynamic regrouping. If the multi-site stream includes a Target Supergroup Alias, this alias will be used. See note on aliases below.
- **Ch. #:** This column will contain
 - **For Control Channel-based Data:** The Channel Number that the activity took place on.
 - **For Multi-site Based Data:** Comma-separated pairs of *<Site Id>-<Channel Number>* for each site channel included in the activity. If the activity includes slot data, comma-separated pairs of *<Site Id>-<Channel Number>-<Slot Number>* for each site channel slot included in the activity. Busy sites are shown in **B-<site1>,<site2>** format. Incapable sites are shown following in **I-<site1>,<site2>** format. See notes below.

- **Ch. Freq:** This column will contain the frequency of the channel the activity took place on. For multi-site based data, this column will be empty.
- **Ch. Alias:** This column will contain the alias of the channel the activity took place on. For multi-site based data, this column will be empty. See note on aliases below.
- **Time Stamp:** The date and time when the activity was received or originated. This will be the packet time stamp for packets that include a time stamp. Otherwise, it will be the date and time the packet was received by the input module.
- **Elapsed Time:** The duration of the activity. Only calls and busies provide an elapsed time.
- **System ID:** The system on which the activity originated.
- **System ID Alias:** The alias of the system on which the activity originated. See note on aliases below.
- **Zone / RFSS ID:** The zone on which the activity originated.
- **Zone / RFSS ID Alias:** The alias of the zone on which the activity originated. See note on aliases below.
- **Site ID:** The site on which the activity originated. For multi-site data, if the activity is Console-based, this column will contain the first (in numerical order) site of all sites involved in the activity.
- **Site ID Alias:** The alias of the site on which the activity originated. See note on aliases below.



Incapable sites are sites whose hardware could not support the call type; such as analog sites for digital calls.



Busy sites are sites that could not support a channel grant at the time of the call. This could be due to a lack of available channels.



You can view the details of an activity by double-clicking on an entry in the *activity list*. This will result in a dialog box showing every property that GenWatch3 knows about the selected activity. This functionality is also available in the *Pause* window.



Aliases (ID, Group, Target Radio ID, Supergroup, Channel, System ID, Zone / RFSS ID, Site ID) can be changed in the GW_Alias GUI. If the alias has not been changed it will appear in the appropriate column using the respective GenWatch3 default GW\${ID}, GW\${Group ID}, GW\${System ID}, etc. format alias.

Maximizing the Activity List

The GW_Activity GUI allows you to resize the *activity list*. To resize the *activity list*, follow the steps below:

1. Hover over the slider bar between the **Packet Types** list and the *activity list*: This will show a resize mouse pointer.
2. Hold down the left-click button and move the mouse up and down to resize the *activity list*.
3. You can also double-click on the slider bar to maximize the *activity list* and hide the **Packet Types** List. To show the **Packet Types** List again, double-click on the slider bar. This can also be done by checking/unchecking the **Packet Types** menu option under the **Filter** menu.

Customizing Channel Activity

The visual appearance of the data shown in the *activity list* can be customized in various ways. Features such as the font, font size, columns, column order, packet type colors, and more can be changed. These allow you to customize the look of the data to fit your needs.

Changing Activity List Font and Size

The font used in the *activity list* to display data can be customized to make certain the data is easily readable. The size and types of monitors used to display the GW_Activity GUI can necessitate different fonts or font sizes to make using and watching the GW_Activity GUI easily readable. To change the font or size, click the **Font** menu option in the **View** menu. You can also display the **Font** window by right-clicking on the activity list and choosing the **Font** menu option from the menu that appears. This will display the **Font** window allowing you to choose the Font, Font style (italic, bold, etc), Font Size, among other options. Make any changes desired and click the **OK** button to immediately see your changes in the *activity list*. Click **Cancel** in the **Font** window to cancel any changes you made since opening that window

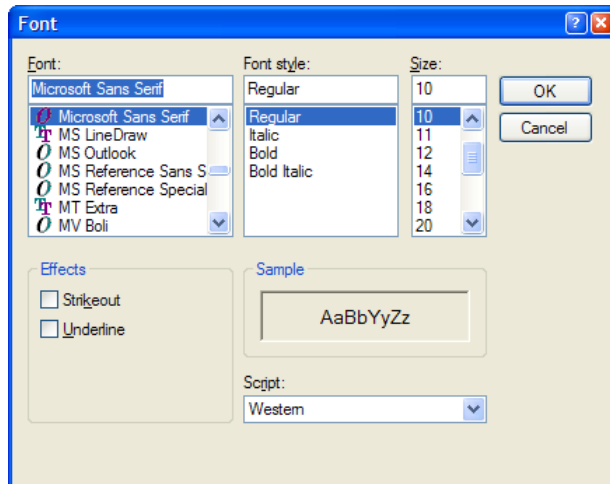


Figure 1.2 – Font Window

Enabling/Disabling the Green Bar

Another feature that can be enabled is the **Green Bar**. When enabled, the background of the rows in the *activity list* is alternately colored green and white. This allows you to easily distinguish between consecutive packets and not confuse the data on adjacent lines. To enable/disable the **Green Bar**, either select the **Green Bar** menu option from the View menu or right-click anywhere on the activity list and select the **Green Bar** option from the menu that appears.



Notice that the Group and Radio ID columns may not change to the green background color. If a Group or Radio ID's background color has been changed in the GW_Alias GUI, those colors assigned will be used instead. See the GW_Alias module book for more details on changing foreground and background colors for groups and radio IDs.

Showing/Hiding Columns

The columns shown in the *Activity List* can be customized to hide or show only certain columns. To select which columns you wish to see in the *Activity List*, click the **Select Columns** menu option under the **View** menu. You can also display this window by right-clicking on the *Activity List* and choosing the **Select Columns** menu option from the menu that appears. This will show the **Select Columns** window allowing you to check or uncheck the columns you wish to see in the *Activity List*. By default, all columns will be checked and thus will appear in the *Activity List*. Unchecking any columns in this window will hide that column in the *Activity List* once you click the **OK** button.

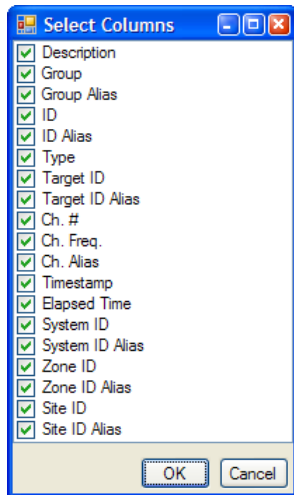


Figure 1.3 – Select Columns Window

Reordering Columns

The order in which the columns are shown in the *Activity List* can be customized simply by dragging and dropping the column headers. This allows you to choose which columns contain the most important information or to group the information in a manner that is best for your needs. To change the location of a particular column, take the following steps:

1. Click and drag the column header (column title) of the column you wish to move.
2. Drag to the left or right until you have reached the desired position. As the column is being dragged, the column you are currently over will be highlighted.
3. Release the mouse button when you have reached the desired position. The column you dragged will be placed at the position of the currently highlighted column. The highlighted column and all columns to its right will now be to the right of the dragged column. All those to the left will continue to be to the left.

Adding a Little Color to Your Life

The GW_Activity GUI allows you to color-code each packet type. To assign a color to a packet type, take the following steps:

1. Right-click on the packet type in the **Packet Types** list that you wish to assign a color to. This will result in a color dialog box.
2. Select the color that you wish to assign to the packet type.
3. Click **OK**. This will change the color of the selected packet type to the chosen color. All activities of this packet type in the *Activity List* will also change to the selected color.



Notice that the Group and Radio ID columns did not change to the selected color. This is because these columns use the colors assigned to them in the GW_Alias GUI. See the GW_Alias module book for more details on changing foreground and background colors for groups and radio IDs.

Disabling Packet Throttling

By default, the GW_Activity module throttles packets to send a distinct input packet no more than once per second. For diagnostic purposes, a user that has the **DisableThrottle** privilege can disable this packet throttling. To enable/disable packet throttling check/uncheck the **Throttle** menu option in the **Filter** menu by clicking on that menu option.



This option has no effect on many multi-site packets, as these packets are generally not sent in duplicate, triplicate, etc.



Throttling is used to reduce network bandwidth between the GW_Activity module and the GW_Activity GUI. When throttling is disabled, GW_Activity uses up to 10 times more network bandwidth.

Filtering Packet Types

The GW_Activity GUI contains a **Packet Types** list that shows all known packet types. This list will start off empty and will add new packet types as they are received by GenWatch3. New packets types will default to checked (Included) in the **Packet Types** list. All checked packet types will appear in the *Activity List* as they are received. Packet types that are unchecked will not be shown in the *Activity List*.



Figure 1.4 – Two Checked (Included) Packets

Selecting All Packets

Click the **Select All** button to select all packet types in the list. This will show all activity for all known packet types.

Unselecting All Packets

Click the **Unselect All** button to unselect all packet types in the list. This will exclude all activity for all known packet types, thus stopping the scrolling activity.

Suppressing Duplicate Packets

This option is only available to users that have the **DisableThrottle** privilege (see the GW_Security module book for a detailed description of privileges). Some input sources echo activity packets in triplicate and quadruplicate. Showing more than one instance of each of these activities is rarely desired. To enable/disable duplicate packets check/uncheck the **Suppress Duplicates** menu option in the **Filter** menu by clicking on that menu option.



This option has no effect on many multi-site packets, as these packets are generally not sent in duplicate, triplicate, etc.

This chapter describes the advanced options available in the GW_Activity GUI.

This chapter contains the following sections:

- **Advanced Filter:** Describes how to filter packets by system ID, zone ID, site ID, group ID, radio ID and/or agency.
- **Pausing the Activity List:** Describes how to create a *Pause* window and the *Pause* window options.
- **Activity Details:** Describes how to view the detailed information for an activity.

Advanced Filters

The GenWatch3 GW_Activity GUI, by default, accepts activity from all connected systems, zones/RFSSs, sites, groups, radios and agencies. The sections below describe how to filter the activity.

If your activity is filtered by groups, radios or agencies, the GW_Activity GUI will show a filter count and type on the right side of the menu bar. For example, if your activity is filtered by 2 groups, 3 radios and 2 agencies, the menu bar will read: **Filtered by: 2 Groups, 3 Radios and 2 Agencies.**

System Filter

If you wish to filter the GW_Activity GUI, based on System, Zone/RFSS or Site, take the following steps:

1. Click on the **Advanced...** menu option of the **Filter** menu. This will load the *Advanced Filters* screen.
2. Click on the **System** tab.
3. Uncheck the nodes of the Systems, Zone/RFSSs and/or Sites that you wish to exclude. Filters are applied to the scrolling data as you check/uncheck nodes.
4. Click the **OK** button: This will return you to the GW_Activity GUI.

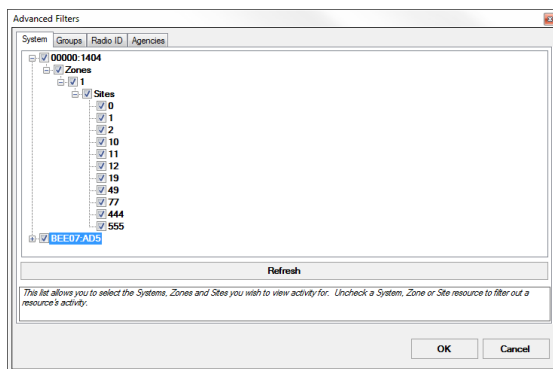


Figure 2.1 – Advanced Filters – System Tab



This tree only contains system IDs, zone/RFSS IDs and site IDs received by the GenWatch3 GW_Activity GUI. This screen does not reference the GenWatch3 Alias database for a list of these IDs.



For single-site systems, the *Advanced Filters* options tree will contain a single system, zone/RFSS and site entry. If you operate a multi-site system, then the *Advanced Filters* options tree could contain multiple System IDs, Zone/RFSS IDs and Site IDs, depending on your system infrastructure.



For multi-site systems, if activity contains a Site ID List and one of the sites in the Site ID List is marked as Allowed, GW_Activity will show this activity. You can see an activity's Site ID List via the *Activity Details* window. See the *Activity Details* section below.

Group Filter

If you wish to filter the GW_Activity GUI, based on group, take the following steps:

1. Click on the **Advanced...** menu option of the **Filter** menu. This will load the *Advanced Filters* screen.
2. Click on the **Groups** tab.
3. Click the **Filter Activity by Group** option.
4. Click the **Add** button to add one or more groups.
5. Click the **OK** button: This will apply your filter and return you to the GW_Activity GUI.

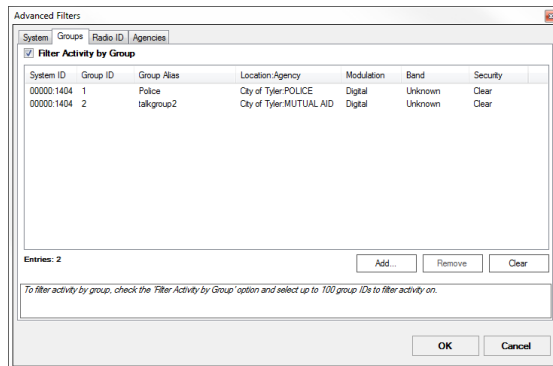


Figure 2.2 – Advanced Filters – Groups Tab

Radio IDs Filter

If you wish to filter the GW_Activity GUI, based on radio ID, take the following steps:

1. Click on the **Advanced...** menu option of the **Filter** menu. This will load the *Advanced Filters* screen.
2. Click on the **Radio IDs** tab.
3. Click the **Filter Activity by Radio** option.
4. Click the **Add** button to add one or more radio IDs.
5. Click the **OK** button: This will apply your filter and return you to the GW_Activity GUI.

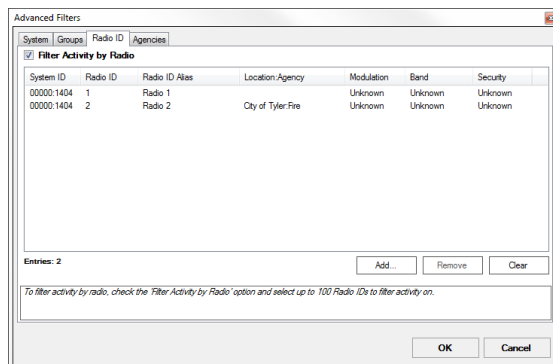


Figure 2.3 – Advanced Filters – Radio IDs Tab

Agencies Filter

If you wish to filter the GW_Activity GUI, based on agencies, take the following steps:

1. Click on the **Advanced...** menu option of the **Filter** menu. This will load the *Advanced Filters* screen.
2. Click on the **Agencies** tab.
3. Click the **Filter Activity by Agency** option.
4. Click the **Add** button to add one or more agencies.
5. Click the **OK** button: This will apply your filter and return you to the GW_Activity GUI.

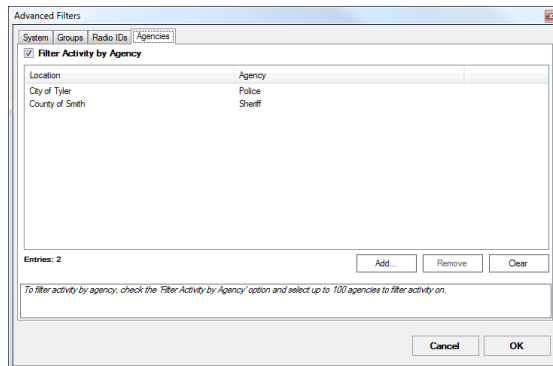


Figure 2.4 – Advanced Filters – Agencies Tab

Pausing the Activity List

You may wish to pause the *Activity List* to view a snapshot of activity data or to make double-clicking on a particular activity easier. To pause the *Activity List*, click the **Pause** menu button. This will result in a new window. This window contains the data in the *Activity List* at the time of the pause.

Description	Group	ID	Type	Target ID	Channel	Timestamp
Scan Marker		1404				03/30/2006 ...
Affiliation	1	2	Dispatch			03/30/2006 ...
System Background Word						03/30/2006 ...
System Status						03/30/2006 ...
Scan Marker		1404				03/30/2006 ...
Affiliation	0	2	Dispatch			03/30/2006 ...
End Of Call	5	2	Dispatch MultiGroup		0. 857237500	03/30/2006 ...
System Status						03/30/2006 ...
Channel Assignment	5	2	Dispatch MultiGroup		0. 857237500	03/30/2006 ...
End Of Call	5	2	Dispatch MultiGroup		0. 857237500	03/30/2006 ...
Scan Marker		1404				03/30/2006 ...
Channel Assignment	5	2	Dispatch MultiGroup		0. 857237500	03/30/2006 ...
End Of Call	5	2	Dispatch MultiGroup		0. 857237500	03/30/2006 ...
Affiliation	5	2	Dispatch MultiGroup			03/30/2006 ...
End Of Call	5	2	Dispatch MultiGroup		0. 857237500	03/30/2006 ...
System Background Word						03/30/2006 ...
System Status						03/30/2006 ...
Channel Assignment	5	2	Dispatch MultiGroup		0. 857237500	03/30/2006 ...
Extended Function		3	Message ACK	1		03/30/2006 ...
Corrupt	5		Orphan Call Activity		0. 857237500	03/30/2006 ...
Scan Marker		1404				03/30/2006 ...
Corrupt	5		Orphan Call Activity		0. 857237500	03/30/2006 ...
Corrupt	5				0. 857237500	03/30/2006 ...
Corrupt	5	3		1		03/30/2006 ...
Corrupt	5	3		2		03/30/2006 ...
Corrupt	5	3	Prev. Word was Invalid		0. 857237500	03/30/2006 ...
Corrupt	6		Invalid DNA		854112500	03/30/2006 ...
Corrupt	0		Invalid DNA		854112500	03/30/2006 ...
Affiliation	5	3	Dispatch MultiGroup			03/30/2006 ...
System Status						03/30/2006 ...
End Of Call		3	Private	2	0. 851012500	03/30/2006 ...
Scan Marker		1404				03/30/2006 ...
System Background Word						03/30/2006 ...

Figure 2.5 – Activity Pause Screen

Pause Window Options

Opacity (available in menu only)

Opacity measures how close a window is to solid (not transparent). You can adjust the opacity of an *Activity Pause* screen (making it more transparent) to allow you to see real-time activity while viewing the *Activity Pause* screen.

Print (available in menu and right-click)

Prints the *Activity Pause* screen. This screen will print in a landscape format (longer horizontally than vertically). You may need to adjust the column widths of the *Activity Pause* screen to print the desired data.

Select All... (available in right-click only)

Contains the following options for selecting like activity in the pause window.

- **Activities on the selected group:** Selects all activities with the same **Group** as the topmost selected activity.
- **Activities from the selected radio ID:** Selects all activities with the same **ID** as the topmost selected activity.
- **Activities of the selected type:** Selects all activities with the same **Description** and **Type** as the topmost selected activity.
- **Activities in the selected conversation:** Selects all activities within the same conversation as the topmost selected activity. This generally involves packets that share a common **Conversation Number** or **Call Index**.

Activity Details

Each activity shown in the activity screen contains much more information than what is shown in the columns of the *Activity List*. To view this additional information, take the steps below:

1. Click the **Pause** button: This will open an *Activity Pause* window.
2. Double-Click on the desired packet: This will show the **Packet Details** window, shown below.

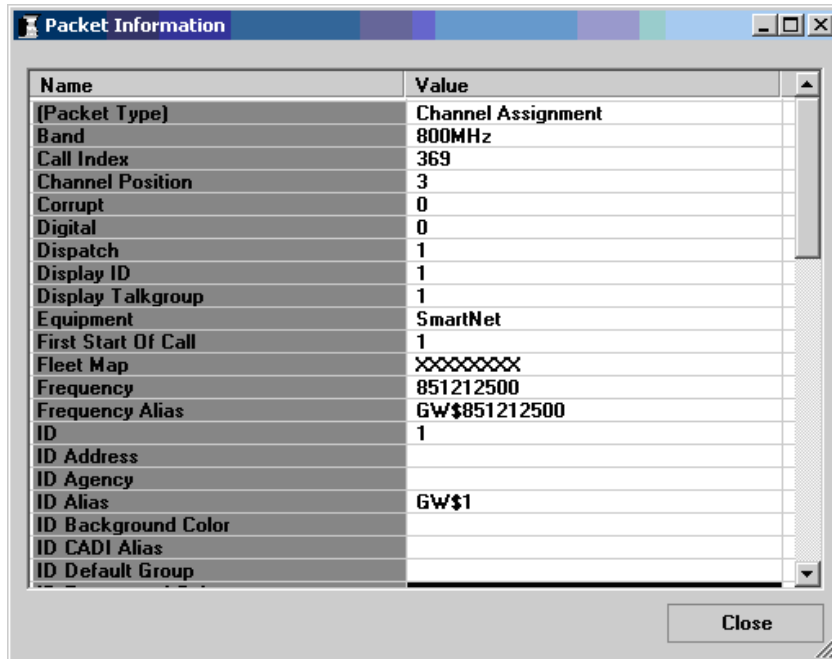


Figure 2.6 – Packet Information Window